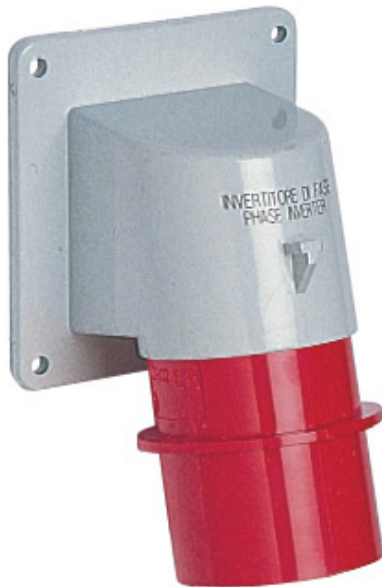


Part number

SIP 3265 SI



Flush-mounting plug, PLUSO series, 3 poles + N + PE, 6 h (red), 32 A, 200/346 ÷ 240/415 V, with phase inverter

Product description

Product type	Plug Flush-mounting
Series	SIP...SI, PLUSO
Connection type	Screw terminal connection
N. of poles	3 poles + N +
Clock position	6
Specification	With phase inverter

Technical data

Current	32 A
Voltage	200/346 ÷ 240/415 V
IP degree of protection	IP44

Further technical details

Weight	270,50 g
Operating temperature range (min, max)	-25°C ... +40°C

Material properties

Colour	RAL 7035 grey, RAL 3000 red
RoHs conformity	Compliant with exemption 6(c): copper alloy containing up to 4% lead by weight
China RoHs - EFUP	50
REACH SVHC substances	Yes Lead
SCIP number	Ca7de37f-add8-4b77-9861-279c94903ade

Approvals / Standards

Reference standard	EN 60309-1 and -2
---------------------------	-------------------

General ordering information

EAN13 code	8015747083911
-------------------	---------------

Packaging Information

Packaging length	355,00 mm
Packaging height	195,00 mm
Packaging width	325,00 mm
Packaging weight	3,22 kg
Packaging volume	22,50 dm ³
Packaging description	Carton box
Packaging quantity	10 Pcs
Packaging EAN code	8015747083928

Part number

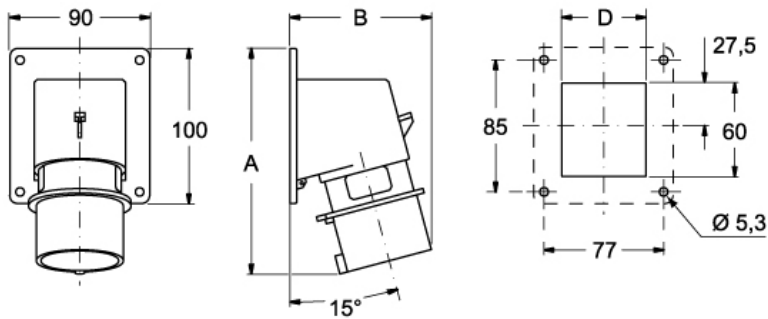
SIP 3265 SI



Catalogue drawings

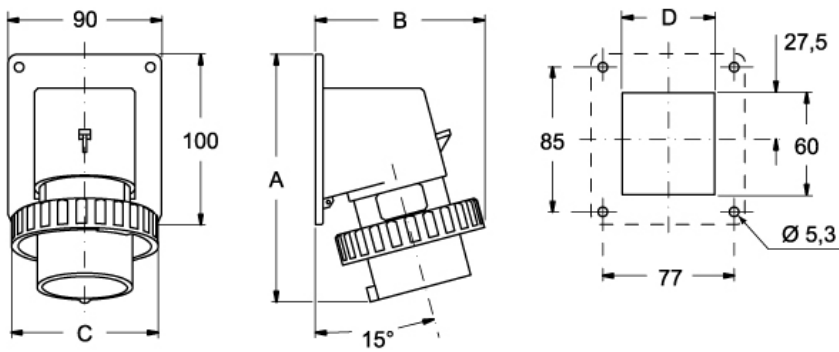
Catalogue drawings

SIP ... SI



	A	B	C
16A	146	93	54
32A	160	106	62

SIPW ... SI



	A	B	C	D
16A	146	99	86	54
32A	160	113	100	62