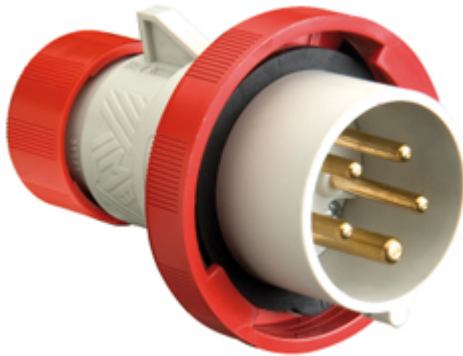



Part number

# PESW 1665 SV



Mobile plug, PLUSO series, SQUICH® quick connection, 3 poles + N + PE, 6 h (red), 16 A, 380 ÷ 415 V, straight

Product description		Material properties	
<b>Product type</b>	Plug Mobile	<b>Colour</b>	RAL 7035 grey, RAL 3000 red
<b>Series</b>	PESW...SV, PLUSO	<b>RoHs conformity</b>	Compliant with exemption 6(c): copper alloy containing up to 4% lead by weight
<b>Connection type</b>	SQUICH® quick connection	<b>China RoHs - EFUP</b>	50
<b>N. of poles</b>	3 poles + N + 	<b>REACH SVHC substances</b>	Yes Lead
<b>Clock position</b>	6	<b>SCIP number</b>	Ca7de37f-add8-4b77-9861-279c94903ade
<b>Specification</b>	Straight	Approvals / Standards	
Technical data		<b>Reference standard</b>	EN 60309-1 and -2
<b>Current</b>	16 A	General ordering information	
<b>Voltage</b>	380 ÷ 415 V	<b>EAN13 code</b>	8015747187268
<b>IP degree of protection</b>	IP66 / IP67	Packaging Information	
Further technical details		<b>Packaging length</b>	330,00 mm
<b>Weight</b>	206,00 g	<b>Packaging height</b>	170,00 mm
<b>Operating temperature range (min, max)</b>	-25°C ... +40°C	<b>Packaging width</b>	352,00 mm
		<b>Packaging weight</b>	4,22 kg
		<b>Packaging volume</b>	19,75 dm <sup>3</sup>
		<b>Packaging description</b>	Carton box
		<b>Packaging quantity</b>	20 Pcs
		<b>Packaging EAN code</b>	8015747187299

Part number

# PESW 1665 SV



Catalogue drawings

