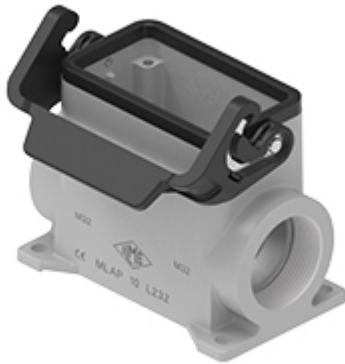


Part number

MLAP 10 L232



Surface mounting housing, IL-BRID series, with 1 lever, M32 x 2 cable entry, size "57.27", high construction

Product description		Material properties	
Product type	Surface mounting housing	Other materials	Lever: Polyamide (PA) and Stainless steel core Gasket NBR
Series	IL-BRID	Colour	RAL 7040 grey
Closing type	With 1 lever	RoHs conformity	Compliant
Size	Size 57.27	China RoHs - EFUP	E
Cable entry	With cable entry M32 x 2	REACH SVHC substances	No
Specification	High construction	General ordering information	
Technical data		EAN13 code	8015747287494
IP degree of protection	IP65 / IP66 / IP69	eCl@ss 8.1	27440202
Further technical details		ETIM 7.0	EC000437
Weight	1,00 g	Packaging Information	
Operating temperature range (min, max)	-40°C...+125°C	Packaging length	475,00 mm
		Packaging height	200,00 mm
		Packaging width	150,00 mm
		Packaging volume	14,25 dm ³
		Packaging description	Carton box
		Packaging quantity	10 Pcs
		Packaging EAN code	8015747194730
		Sub-packaging description	Plastic packaging
		Sub-packaging quantity	5 Pcs
		Sub-packaging EAN barcode	8015747194747

Part number

MLAP 10 L232



Catalogue drawings

