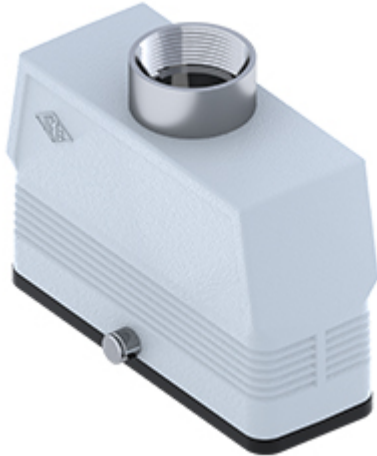


Part number

# MAV 24 GYC40



Hood, CENTRAL LEVER series, with 2 pegs, M40 top cable entry, size "104.27", high construction

## Product description

<b>Product type</b>	Hood
<b>Series</b>	CENTRAL LEVER
<b>Closing type</b>	With 2 pegs
<b>Size</b>	Size 104.27
<b>Cable entry</b>	Top cable entry with adapter M40
<b>Specification</b>	High construction

## Technical data

**IP degree of protection** IP65

## Further technical details

<b>Weight</b>	412,50 g
<b>Operating temperature range (min, max)</b>	-40°C...+125°C

## Material properties

<b>Other materials</b>	Gasket: NBR
<b>Colour</b>	RAL 7040 grey
<b>RoHs conformity</b>	Compliant with exemption 6(c): copper alloy containing up to 4% lead by weight
<b>China RoHs - EFUP</b>	50
<b>REACH SVHC substances</b>	Yes Lead
<b>SCIP number</b>	15deaf78-e939-4401-a0b0-e2228ca32a03

## Approvals / Standards

<b>UL</b>	ECBT2
<b>cUL</b>	ECBT8

## General ordering information

<b>EAN13 code</b>	8015747259187
<b>eCl@ss 8.1</b>	27440202
<b>ETIM 7.0</b>	EC000437

## Packaging Information

<b>Sub-packaging weight</b>	2,06 kg
<b>Sub-packaging description</b>	Plastic packaging
<b>Sub-packaging quantity</b>	5 Pcs
<b>Sub-packaging EAN barcode</b>	8015747259194

Part number

# MAV 24 GYC40



Catalogue drawings

