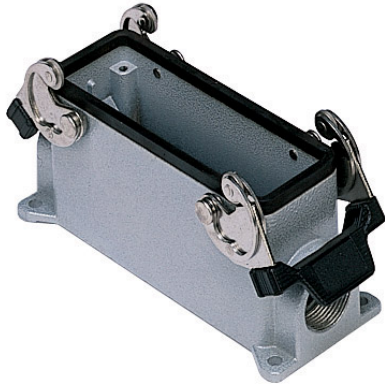


Part number

# MAP 24.40



Surface mounting housing, C-TYPE series, with 2 levers, M40 cable entry, size "104.27", high construction

#### Product description

|                      |                          |
|----------------------|--------------------------|
| <b>Product type</b>  | Surface mounting housing |
| <b>Series</b>        | C-TYPE                   |
| <b>Closing type</b>  | With 2 levers            |
| <b>Size</b>          | Size 104.27              |
| <b>Cable entry</b>   | With cable entry<br>M40  |
| <b>Specification</b> | High construction        |

#### Technical data

|                                |                    |
|--------------------------------|--------------------|
| <b>IP degree of protection</b> | IP65 / IP66 / IP69 |
|--------------------------------|--------------------|

#### Further technical details

|   |                |
|---|----------------|
| <b>Weight</b>                                 | 510,00 g       |
| <b>Operating temperature range (min, max)</b> | -40°C...+125°C |

#### Material properties

|                              |   |
|------------------------------|---|
| <b>Other materials</b>       | Lever: Stainless steel, polyamide (PA)<br>Gasket: NBR |
| <b>Colour</b>                | RAL 7040 grey   |
| <b>RoHs conformity</b>       | Compliant   |
| <b>China RoHs - EFUP</b>     | E   |
| <b>REACH SVHC substances</b> | No  |

#### Approvals / Standards

|                       |         |
|-----------------------|---------|
| <b>Certifications</b> | DNV, BV |
| <b>UL</b>             | ECBT2   |
| <b>cUL</b>            | ECBT8   |

#### General ordering information

|                   |               |
|-------------------|---------------|
| <b>EAN13 code</b> | 8015747052030 |
| <b>eCl@ss 8.1</b> | 27440202      |
| <b>ETIM 7.0</b>   | EC000437      |

#### Packaging Information

|                                  |                       |
|----------------------------------|-----------------------|
| <b>Packaging length</b>          | 475,00 mm             |
| <b>Packaging height</b>          | 220,00 mm             |
| <b>Packaging width</b>           | 200,00 mm             |
| <b>Packaging weight</b>          | 5,10 kg               |
| <b>Packaging volume</b>          | 20,90 dm <sup>3</sup> |
| <b>Packaging description</b>     | Carton box            |
| <b>Packaging quantity</b>        | 10 Pcs                |
| <b>Packaging EAN code</b>        | 8015747250184         |
| <b>Sub-packaging weight</b>      | 2,55 kg               |
| <b>Sub-packaging description</b> | Plastic packaging     |
| <b>Sub-packaging quantity</b>    | 5 Pcs                 |
| <b>Sub-packaging EAN barcode</b> | 8015747052047         |

Part number

# MAP 24.40



Catalogue drawings

## CHP CAP - MHP MAP



## CHP CS/CP CAP CS/CP - MHP CS/CP MAP CS/CP



|                        | <b>A</b> |
|------------------------|----------|
| <b>CHP / MHP</b>       | 63       |
| <b>CAP / MAP</b>       | 80       |
| <b>CHP CS / MHP CS</b> | 63       |
| <b>CAP CS / MAP CS</b> | 80       |
| <b>CHP CP / MHP CP</b> | 63       |
| <b>CAP CP / MAP CP</b> | 80       |