

Part number

M7AP 06 LS32



Surface mounting housing, V-TYPE series, with 1 lever, M32 cable entry, size "44.27", high construction, with metal cover

Product description

Product type	Surface mounting housing
Series	V-TYPE
Closing type	With 1 lever
Size	Size 44.27
Cable entry	With cable entry M32
Specification	High construction, with metal cover

Technical data

IP degree of protection	IP66 / IP67 / IP69
--------------------------------	--------------------

Further technical details

Weight	1,00 g
Operating temperature range (min, max)	-40°C...+125°C

Material properties

Other materials	Lever: Stainless steel Gasket: NBR
Colour	RAL 7040 grey
RoHs conformity	Compliant
China RoHs - EFUP	E
REACH SVHC substances	No

Approvals / Standards

Certifications	DNV, BV
UL	ECBT2
cUL	ECBT8

General ordering information

EAN13 code	8015747240086
eCl@ss 8.1	27440202
ETIM 7.0	EC000437

Packaging Information

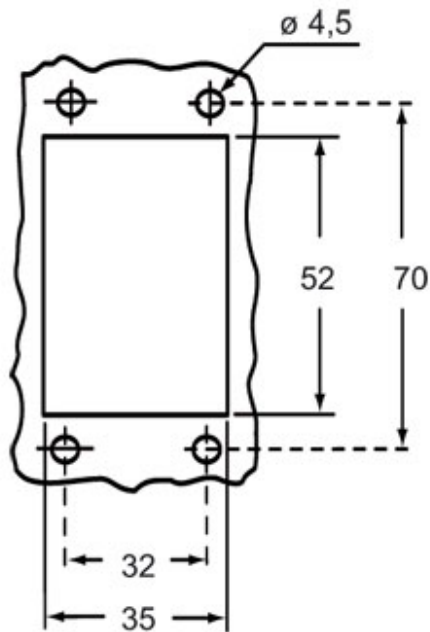
Packaging length	370,00 mm
Packaging height	140,00 mm
Packaging width	210,00 mm
Packaging volume	10,88 dm ³
Packaging description	Carton box
Packaging quantity	10 Pcs
Packaging EAN code	8015747281218
Sub-packaging description	Plastic packaging
Sub-packaging quantity	5 Pcs
Sub-packaging EAN barcode	8015747281225

Part number

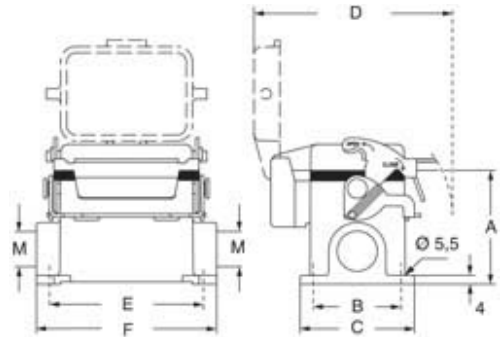
M7AP 06 LS32



Catalogue drawings



Catalogue drawings



type	A	B	C	D	E	F
M7P 06 LS	53	40	52	91	70	82
M7AP 06 LS	73	45	57	91	70	82