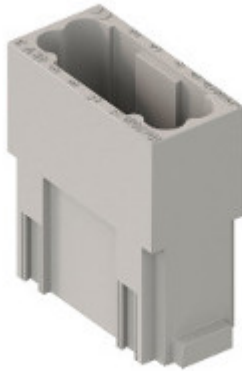


Part number

CX 12 DM



Male modular insert, Mixo series, crimp connection, 12 poles, 1 module, 10 A 250 V 4 kV 3

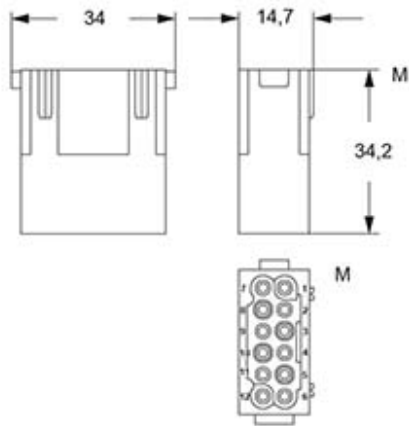
Product description		Material properties	
Product type	Modular insert	Main material	Polycarbonate
Series	Mixo	Colour	RAL 7032 grey
Connection type	Crimp connection	RoHs conformity	Compliant
Gender	Male	China RoHs - EFUP	E
N. of poles	12 poles	REACH SVHC substances	No
Size	1 module	Approvals / Standards	
Specification	Standard & HNM (High Number of Matings)	Reference standard	EN 61984:2009-06
Technical data		Certifications	CSAc, CQC, DNV, BV, EAC
Current	10 A	UL	ECBT2
Voltage	250 V	cUL	ECBT8
Rated impulse withstand voltage	4 kV	General ordering information	
Pollution degree	3	EAN13 code	8015747042062
Rated voltage according to UL/CSA	600 V	eCl@ss 8.1	27440205
IP degree of protection	IP20 without enclosure, IP65/IP66/IP68/IP69 with enclosure	ETIM 7.0	EC000438
Further technical details		Packaging Information	
Characteristics according to EN 61984	10A 250V 4kV 3	Packaging length	180,00 mm
Mating cycles	≥ 500	Packaging height	120,00 mm
Insulation resistance	≥ 10 GΩ	Packaging width	155,00 mm
Contact resistance	≤ 3 mΩ	Packaging weight	0,76 kg
Weight	8,80 g	Packaging volume	3,35 dm ³
Operating temperature range (min, max)	-40 °C ... +125 °C	Packaging description	Carton box
UL 94 flammability rating	V-0	Packaging quantity	60 Pcs
		Packaging EAN code	8015747221320
		Sub-packaging length	35,00 mm
		Sub-packaging height	40,00 mm
		Sub-packaging width	155,00 mm
		Sub-packaging weight	0,13 kg
		Sub-packaging volume	0,22 dm ³
		Sub-packaging description	Carton tray
		Sub-packaging quantity	10 Pcs
		Sub-packaging EAN barcode	8015747042079

Part number

CX 12 DM



Catalogue drawings



Derating curves

