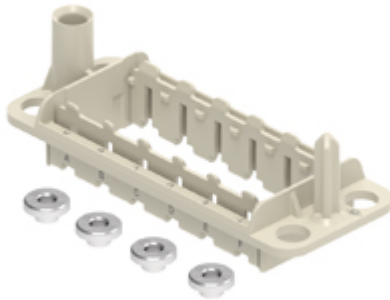


Part number

# CX 06 PDM



Docking frame, float-mount, 6 modules, size 104.27

## Product description

<b>Product type</b>	Docking frame
<b>Size</b>	Size 104.27
<b>Specification</b>	For 6 modular inserts and enclosures size 104.27

## Technical data

<b>IP degree of protection</b>	IP20
--------------------------------	------

## Further technical details

<b>Mating cycles</b>	$\geq 500$   $\geq 10000$ (MIXO units with HNM contacts)
<b>Weight</b>	1,00 g
<b>Operating temperature range (min, max)</b>	-40°C ... +125°C
<b>UL 94 flammability rating</b>	V-0

## Material properties

<b>Main material</b>	Polycarbonate (PC)
<b>Colour</b>	RAL 7032 grey
<b>RoHS conformity</b>	Compliant
<b>China RoHS - EFUP</b>	E
<b>REACH SVHC substances</b>	No

## General ordering information

<b>EAN13 code</b>	8015747223669
<b>eCl@ss 8.1</b>	27440210
<b>ETIM 7.0</b>	EC002310

## Packaging Information

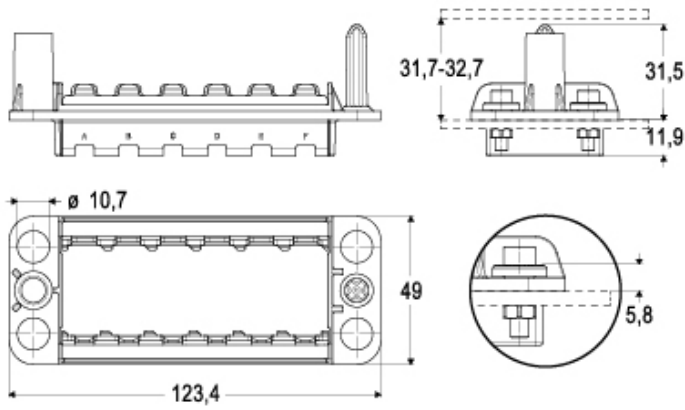
<b>Packaging description</b>	Carton box
<b>Packaging quantity</b>	10 Pcs
<b>Packaging EAN code</b>	8015747303279
<b>Sub-packaging description</b>	Plastic bag
<b>Sub-packaging quantity</b>	1 Pcs
<b>Sub-packaging EAN barcode</b>	8015747303286

Part number

# CX 06 PDM



Catalogue drawings



Catalogue drawings

