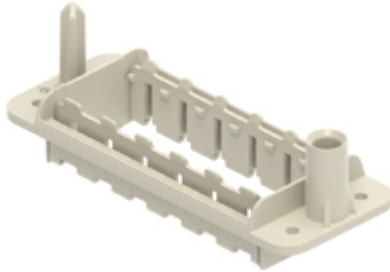


Part number

CX 06 PDF



Docking frame, fixed-mount, 6 modules, size 104.27

Product description	
Product type	Docking frame
Size	Size 104.27
Specification	For 6 modular inserts and enclosures size 104.27
Technical data	
IP degree of protection	IP20
Further technical details	
Mating cycles	≥ 500 ≥ 10000 (MIXO units with HNM contacts)
Weight	1,00 g
Operating temperature range (min, max)	-40°C ... +125°C
UL 94 flammability rating	V-0

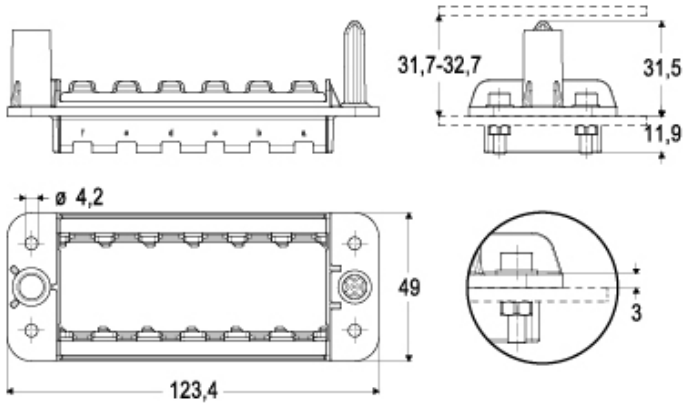
Material properties	
Main material	Polycarbonate (PC)
Colour	RAL 7032 grey
RoHs conformity	Compliant
China RoHs - EFUP	E
REACH SVHC substances	No
General ordering information	
EAN13 code	8015747303132
eCl@ss 8.1	27440210
ETIM 7.0	EC002310
Packaging Information	
Packaging description	Carton box
Packaging quantity	10 Pcs
Packaging EAN code	8015747303293
Sub-packaging description	Plastic bag
Sub-packaging quantity	1 Pcs
Sub-packaging EAN barcode	8015747303309

Part number

CX 06 PDF



Catalogue drawings



Catalogue drawings

