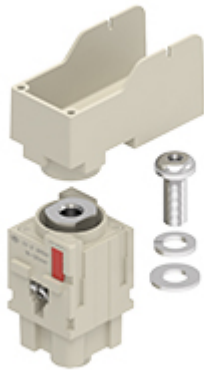


Part number

# CX 01 30PEAF



Female modular insert, Mixo series, screw terminal connections - 90° angled for cable lug, 1 pole, 2 modules, 300 A, PE module for earth termination

Product description	
<b>Product type</b>	Modular insert
<b>Series</b>	Mixo
<b>Connection type</b>	Screw terminal connection
<b>Gender</b>	Female
<b>N. of poles</b>	1 PE pole
<b>Size</b>	2 modules
<b>Specification</b>	For wire cross-section 16-120 mm <sup>2</sup> PE angled MIXO Module
Technical data	
<b>Current</b>	300 A
<b>Rated impulse withstand voltage</b>	8 kV
<b>Pollution degree</b>	3
<b>Contact type</b>	Turned silver plated
<b>IP degree of protection</b>	IP20 without enclosure, IP65/IP66/IP68/IP69 with enclosure
Further technical details	
<b>Mating cycles</b>	≥ 500
<b>Contact resistance</b>	≤ 3 mΩ
<b>Weight</b>	115,00 g
<b>Operating temperature range (min, max)</b>	-40 °C ... +125 °C
<b>UL 94 flammability rating</b>	V-0

Material properties	
<b>Main material</b>	Polycarbonate
<b>Other materials</b>	Contacts: copper alloy
<b>Colour</b>	RAL 7032 grey
<b>RoHs conformity</b>	Compliant with exemption 6(c): copper alloy containing up to 4% lead by weight
<b>China RoHs - EFUP</b>	50
<b>REACH SVHC substances</b>	Yes Lead
General ordering information	
<b>EAN13 code</b>	8015747289900
<b>eCl@ss 8.1</b>	27440205
<b>ETIM 7.0</b>	EC000438
Packaging Information	
<b>Packaging weight</b>	0,63 kg
<b>Packaging volume</b>	1,24 dm <sup>3</sup>
<b>Packaging description</b>	Carton box
<b>Packaging quantity</b>	5 Pcs
<b>Packaging EAN code</b>	8015747290128
<b>Sub-packaging length</b>	145,00 mm
<b>Sub-packaging height</b>	89,00 mm
<b>Sub-packaging width</b>	120,00 mm
<b>Sub-packaging weight</b>	0,13 kg
<b>Sub-packaging volume</b>	1,55 dm <sup>3</sup>
<b>Sub-packaging description</b>	Plastic bag
<b>Sub-packaging quantity</b>	1 Pcs
<b>Sub-packaging EAN barcode</b>	8015747290135

Part number

# CX 01 30PEAF



Catalogue drawings

