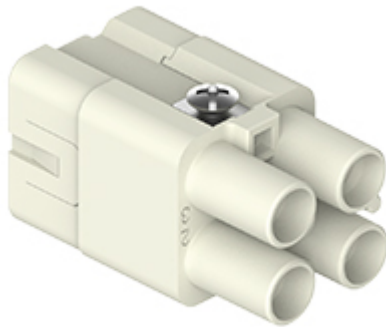



Part number

# CQ4F 03/2



Female insert, CQ series, crimp connection, 3 + 2 poles + PE, 40 A 400 V 6 kV 3 / 10 A 250 V 4 kV 3, size "21.21"

Product description	
<b>Product type</b>	Insert
<b>Series</b>	CQ
<b>Connection type</b>	Crimp connection
<b>Gender</b>	Female
<b>N. of poles</b>	3 poles + 
<b>Auxiliary poles</b>	2 poles
<b>Size</b>	Size "21.21"
Technical data	
<b>Current</b>	40 A
<b>Voltage</b>	400 V
<b>Rated impulse withstand voltage</b>	6 kV
<b>Pollution degree</b>	3
<b>Rated voltage according to UL/CSA</b>	600 V
<b>IP degree of protection</b>	IP20 without enclosure, IP65/IP66/IP68/IP69 with enclosure
Further technical details	
<b>Characteristics according to EN 61984</b>	40 A 400 V 6 kV 3 / 10 A 250 V 4 kV 3
<b>Mating cycles</b>	≥ 500
<b>Insulation resistance</b>	≥ 10 GΩ
<b>Contact resistance</b>	≤ 0,3 mΩ (3 poles) / ≤ 3 mΩ (2 poles)
<b>Weight</b>	15,00 g
<b>Operating temperature range (min, max)</b>	-40 °C ... +125 °C
<b>UL 94 flammability rating</b>	V-0

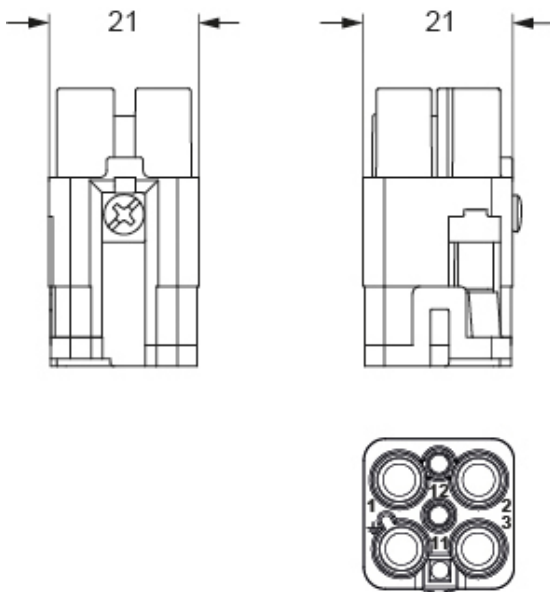
Material properties	
<b>Main material</b>	Polycarbonate (PC)
<b>Colour</b>	RAL 7032 grey
<b>RoHs conformity</b>	Compliant
Approvals / Standards	
<b>Certifications</b>	DNV, BV, EAC
<b>UL</b>	ECBT2, PVVA2
<b>cUL</b>	ECBT8, PVVA8
General ordering information	
<b>EAN13 code</b>	8015747269506
<b>eCl@ss 8.1</b>	27440205
<b>ETIM 7.0</b>	EC000438
Packaging Information	
<b>Packaging length</b>	200,00 mm
<b>Packaging height</b>	245,00 mm
<b>Packaging width</b>	146,00 mm
<b>Packaging weight</b>	3,20 kg
<b>Packaging volume</b>	7,15 dm <sup>3</sup>
<b>Packaging description</b>	Carton box
<b>Packaging quantity</b>	200 Pcs
<b>Packaging EAN code</b>	8015747269537
<b>Sub-packaging length</b>	116,00 mm
<b>Sub-packaging height</b>	43,00 mm
<b>Sub-packaging width</b>	180,00 mm
<b>Sub-packaging weight</b>	0,64 kg
<b>Sub-packaging volume</b>	0,90 dm <sup>3</sup>
<b>Sub-packaging description</b>	Carton tray
<b>Sub-packaging quantity</b>	40 Pcs
<b>Sub-packaging EAN barcode</b>	8015747269544

Part number

# CQ4F 03/2



Catalogue drawings



Derating curves

