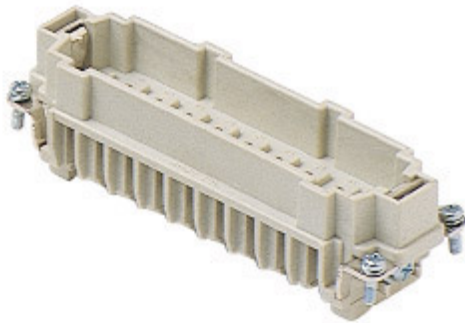



Part number

CMCEM 16



Male insert, CMCE series, crimp connection,
16 + 2 poles + PE, 16 A 400/690 V 6 kV 3 / 16
A 500 V 6 kV 3, size "104.27"

Product description		Material properties	
Product type	Insert	Main material	Polycarbonate (PC)
Series	CMCE	Colour	RAL 7032 grey
Connection type	Crimp connection	RoHS conformity	Compliant
Gender	Male	China RoHS - EFUP	E
N. of poles	16 poles + 	REACH SVHC substances	No
Auxiliary poles	2 poles	Approvals / Standards	
Size	Size 104.27	Reference standard	EN 61984:2009-06
Technical data		Certifications	CSA, CQC, DNV, BV, EAC
Current	16 A	UL	ECBT2
Voltage	400 - 690 V	General ordering information	
Rated impulse withstand voltage	6 kV	EAN13 code	8015747136150
Pollution degree	3	ETIM 7.0	EC000438
Rated voltage according to UL/CSA	600 V	Packaging Information	
IP degree of protection	IP20 without enclosure, IP65/IP66 with enclosure	Packaging length	270,00 mm
Further technical details		Packaging height	75,00 mm
Characteristics according to EN 61984	16A 830V 8kV 3 (aux: 16A 500V 6kV 3); 16A 1000V 8kV 2 (power contacts only)	Packaging width	180,00 mm
Mating cycles	≥ 500	Packaging weight	2,37 kg
Insulation resistance	≥ 10 GΩ	Packaging volume	3,65 dm ³
Contact resistance	≤ 1 mΩ	Packaging description	Carton box
Weight	67,00 g	Packaging quantity	30 Pcs
Operating temperature range (min, max)	-40 °C ... +125 °C	Packaging EAN code	8015747136297
UL 94 flammability rating	V-0	Sub-packaging length	113,00 mm
		Sub-packaging height	36,00 mm
		Sub-packaging width	180,00 mm
		Sub-packaging weight	0,40 kg
		Sub-packaging volume	0,73 dm ³
		Sub-packaging description	Carton tray
		Sub-packaging quantity	5 Pcs
		Sub-packaging EAN barcode	8015747136303

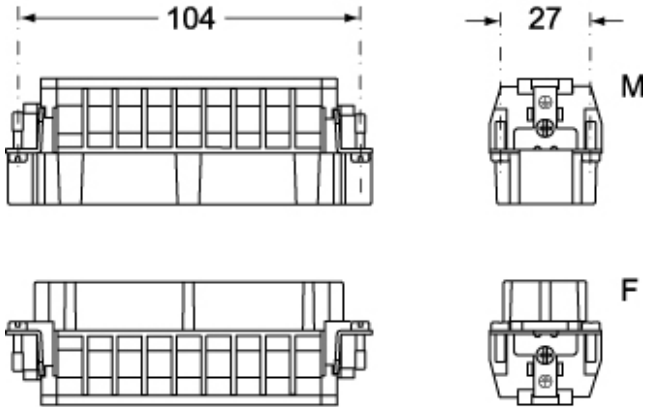
Part number

CMCEM 16

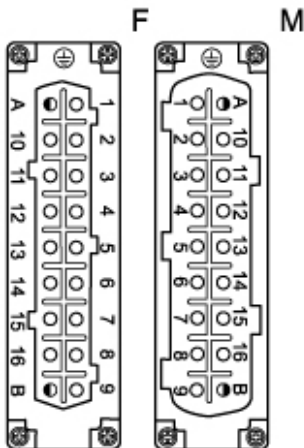


Catalogue drawings

CMCEM 16



CMCEF 16



Catalogue drawings

