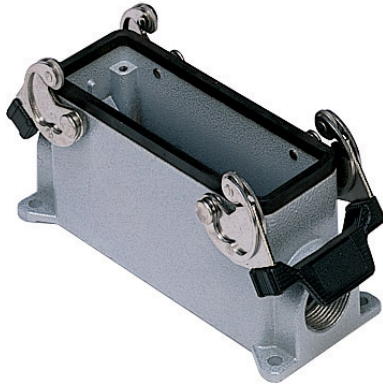


Part number

CHP 24.2



Surface mounting housing, C-TYPE series, with 2 levers, Pg21 x 2 cable entry, size "104.27"



Product description

| | |
|---------------------|------------------------------|
| Product type | Surface mounting housing |
| Series | C-TYPE |
| Closing type | With 2 levers |
| Size | Size 104.27 |
| Cable entry | With cable entry Pg21 x 2 |

Technical data

IP degree of protection IP65 / IP66 / IP69

Further technical details

| | |
|---|----------------|
| Weight | 375,00 g |
| Operating temperature range (min, max) | -40°C...+125°C |

Material properties

| | |
|------------------------------|---|
| Other materials | Lever: Stainless steel, polyamide (PA) Gasket: NBR |
| Colour | RAL 7040 grey |
| RoHs conformity | Compliant |
| China RoHs - EFUP | E |
| REACH SVHC substances | No |

Approvals / Standards

| | |
|-----------------------|---------|
| Certifications | DNV, BV |
| UL | ECBT2 |
| cUL | ECBT8 |

General ordering information

EAN13 code 8015747022675

Packaging Information

| | |
|----------------------------------|-----------------------|
| Packaging length | 475,00 mm |
| Packaging height | 180,00 mm |
| Packaging width | 200,00 mm |
| Packaging weight | 4,30 kg |
| Packaging volume | 17,10 dm ³ |
| Packaging description | Carton box |
| Packaging quantity | 10 Pcs |
| Packaging EAN code | 8015747022682 |
| Sub-packaging weight | 2,15 kg |
| Sub-packaging description | Plastic packaging |
| Sub-packaging quantity | 5 Pcs |
| Sub-packaging EAN barcode | 8015747022699 |

Part number

CHP 24.2



Catalogue drawings

CHP CAP - MHP MAP



CHP CS/CP CAP CS/CP - MHP CS/CP MAP CS/CP



| | A |
|------------------------|----------|
| CHP / MHP | 63 |
| CAP / MAP | 80 |
| CHP CS / MHP CS | 63 |
| CAP CS / MAP CS | 80 |
| CHP CP / MHP CP | 63 |
| CAP CP / MAP CP | 80 |