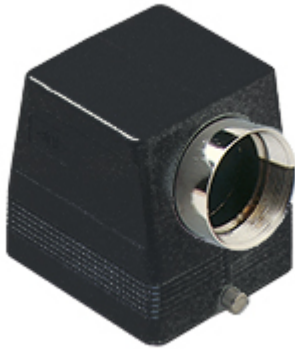


Part number

# CHOW 32 L



Hood, W-TYPE series, with 2 pegs, Pg36 side cable entry, size "77.62"

Product description		Material properties	
<b>Product type</b>	Hood	<b>Other materials</b>	Gasket: FKM
<b>Series</b>	W-TYPE	<b>Colour</b>	RAL 9005 black
<b>Closing type</b>	With 2 pegs		Compliant with exemption 6(c): copper alloy containing up to 4% lead by weight
<b>Size</b>	Size 77.62	<b>RoHs conformity</b>	
<b>Cable entry</b>	Side cable entry with adapter Pg36	<b>China RoHs - EFUP</b>	50
Technical data		<b>REACH SVHC substances</b>	Yes Lead
<b>IP degree of protection</b>	IP65 / IP66 / IP69	<b>SCIP number</b>	15deaf78-e939-4401-a0b0-e2228ca32a03
Further technical details		Approvals / Standards	
<b>Weight</b>	417,70 g	<b>Certifications</b>	DNV, BV
<b>Operating temperature range (min, max)</b>	-40°C...+125°C	<b>UL</b>	ECBT2
		<b>cUL</b>	ECBT8
		General ordering information	
		<b>EAN13 code</b>	8015747021319
		Packaging Information	
		<b>Packaging length</b>	370,00 mm
		<b>Packaging height</b>	140,00 mm
		<b>Packaging width</b>	210,00 mm
		<b>Packaging weight</b>	3,49 kg
		<b>Packaging volume</b>	10,88 dm <sup>3</sup>
		<b>Packaging description</b>	Carton box
		<b>Packaging quantity</b>	8 Pcs
		<b>Packaging EAN code</b>	8015747021326
		<b>Sub-packaging weight</b>	0,44 kg
		<b>Sub-packaging description</b>	Plastic packaging
		<b>Sub-packaging quantity</b>	1 Pcs
		<b>Sub-packaging EAN barcode</b>	8015747021333