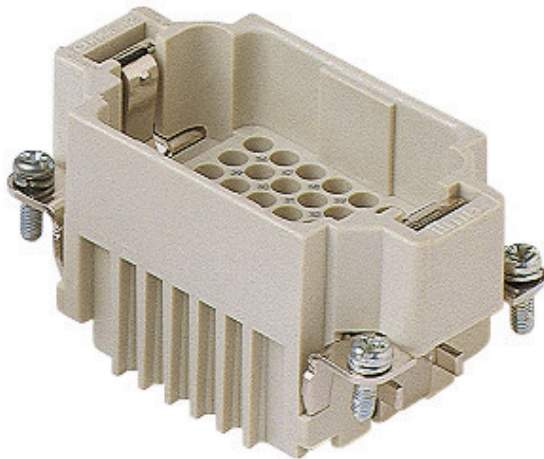



Part number

CDDM 42



Male insert, CDD series, crimp connection, 42 poles + PE, 10 A 250 V 4 kV 2, size "57.27"

Product description		Material properties	
Product type	Insert	Main material	Polycarbonate (PC)
Series	CDD	Colour	RAL 7032 grey
Connection type	Crimp connection	RoHs conformity	Compliant
Gender	Male	China RoHs - EFUP	E
N. of poles	42 poles + 	REACH SVHC substances	No
Size	Size 57.27	Approvals / Standards	
Technical data		Reference standard	EN 61984:2009-06
Current	10 A	Certifications	CSAc, CQC, DNV, BV, EAC
Voltage	250 V	UL	ECBT2
Rated impulse withstand voltage	4 kV	cUL	ECBT8
Pollution degree	2	General ordering information	
Rated voltage according to UL/CSA	600 V	EAN13 code	8015747014113
IP degree of protection	IP20 without enclosure, IP65/IP66/IP68/IP69 with enclosure	eCl@ss 8.1	27440205
Further technical details		ETIM 7.0	EC000438
Characteristics according to EN 61984	10A 250V 4kV 2	Packaging Information	
Mating cycles	≥ 500	Packaging length	210,00 mm
Insulation resistance	≥ 10 GΩ	Packaging height	75,00 mm
Contact resistance	≤ 3 mΩ	Packaging width	180,00 mm
Weight	46,50 g	Packaging weight	1,81 kg
Operating temperature range (min, max)	-40 °C ... +125 °C	Packaging volume	2,84 dm ³
UL 94 flammability rating	V-0	Packaging description	Carton box
Tightening torque for PE connection	M4: 1,2 Nm, 10,6 lb.in (Ph2 or 1,0x5,5mm)	Packaging quantity	30 Pcs
Tightening torque for fixing screws	M3: 0.5 Nm; 4.4 lb.in (Ph1 or 0.8x4 mm)	Packaging EAN code	8015747014120
		Sub-packaging length	67,00 mm
		Sub-packaging height	36,00 mm
		Sub-packaging width	180,00 mm
		Sub-packaging weight	0,30 kg
		Sub-packaging volume	0,43 dm ³
		Sub-packaging description	Carton tray
		Sub-packaging quantity	5 Pcs
		Sub-packaging EAN barcode	8015747014137

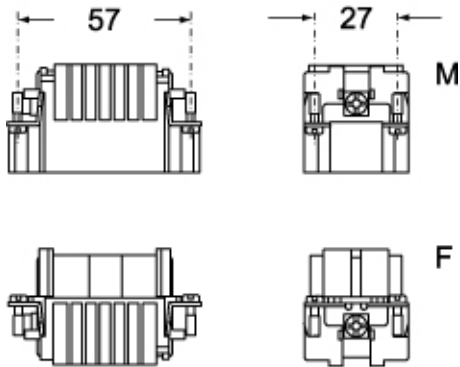
Part number

CDDM 42

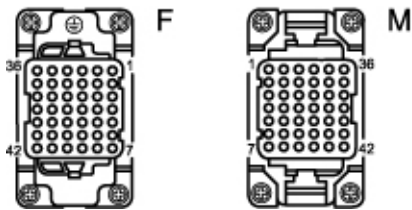


Catalogue drawings

CDDM 42



CDDF 42



Catalogue drawings

