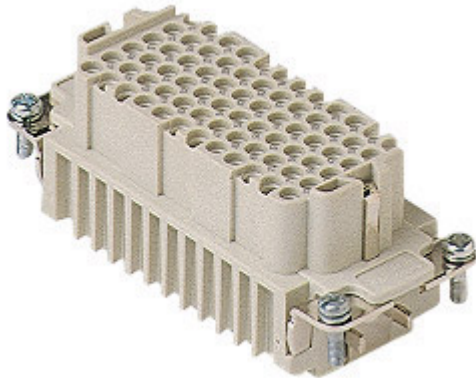



Part number

CDDF 72



Female insert, CDD series, crimp connection,
72 poles + PE, 10 A 250 V 4 kV 2, size "77.27"

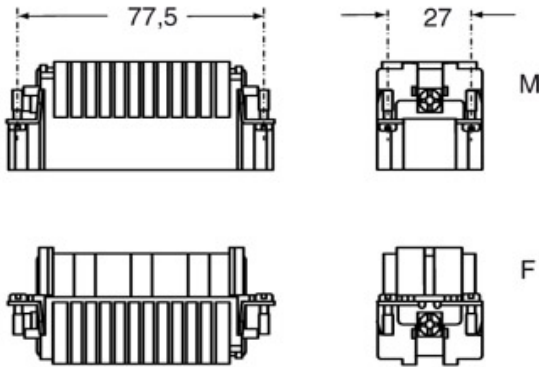
| Product description | | Material properties | |
|---|--|-------------------------------------|-------------------------|
| Product type | Insert | Main material | Polycarbonate (PC) |
| Series | CDD | Colour | RAL 7032 grey |
| Connection type | Crimp connection | RoHs conformity | Compliant |
| Gender | Female | China RoHs - EFUP | E |
| N. of poles | 72 poles +  | REACH SVHC substances | No |
| Size | Size 77.27 | Approvals / Standards | |
| Technical data | | Reference standard | EN 61984:2009-06 |
| Current | 10 A | Certifications | CSAc, CQC, DNV, BV, EAC |
| Voltage | 250 V | UL | ECBT2 |
| Rated impulse withstand voltage | 4 kV | cUL | ECBT8 |
| Pollution degree | 2 | General ordering information | |
| Rated voltage according to UL/CSA | 600 V | EAN13 code | 8015747013833 |
| IP degree of protection | IP20 without enclosure, IP65/IP66/IP68/IP69 with enclosure | eCl@ss 8.1 | 27440205 |
| Further technical details | | ETIM 7.0 | EC000438 |
| Characteristics according to EN 61984 | 10A 250V 4kV 2 | Packaging Information | |
| Mating cycles | ≥ 500 | Packaging length | 230,00 mm |
| Insulation resistance | ≥ 10 GΩ | Packaging height | 110,00 mm |
| Contact resistance | ≤ 3 mΩ | Packaging width | 180,00 mm |
| Weight | 62,50 g | Packaging weight | 2,17 kg |
| Operating temperature range (min, max) | -40 °C ... +125 °C | Packaging volume | 4,55 dm ³ |
| UL 94 flammability rating | V-0 | Packaging description | Carton box |
| Tightening torque for PE connection | M4: 1,2 Nm, 10,6 lb.in (Ph2 or 1,0x5,5mm) | Packaging quantity | 30 Pcs |
| Tightening torque for fixing screws | M3: 0,5 Nm; 4.4 lb.in (Ph1 or 0.8x4 mm) | Packaging EAN code | 8015747013840 |
| | | Sub-packaging length | 87,00 mm |
| | | Sub-packaging height | 36,00 mm |
| | | Sub-packaging width | 180,00 mm |
| | | Sub-packaging weight | 0,36 kg |
| | | Sub-packaging volume | 0,56 dm ³ |
| | | Sub-packaging description | Carton tray |
| | | Sub-packaging quantity | 5 Pcs |
| | | Sub-packaging EAN barcode | 8015747013857 |

Part number

CDDF 72



Catalogue drawings



Catalogue drawings

