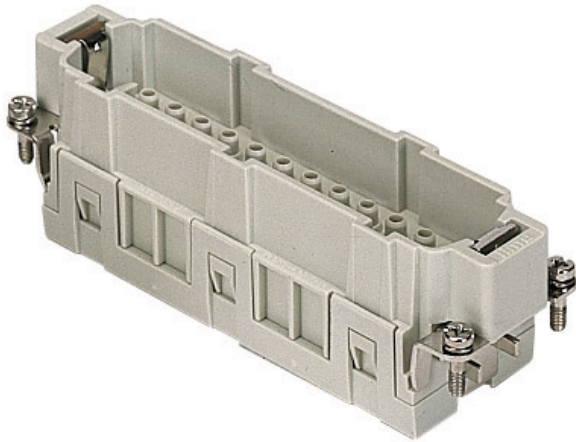



Part number

# CCEM 24 N



Male insert, CCE series, crimp connection, 24 poles + PE (25-48), 16 A 500 V 6 kV 3, size "104.62"

## Product description

|                        |  |
|------------------------|--|
| <b>Product type</b>    | Insert   |
| <b>Series</b>          | CCE  |
| <b>Connection type</b> | Crimp connection   |
| <b>Gender</b>          | Male   |
| <b>N. of poles</b>     | 48 poles +  |
| <b>Size</b>            | Size 104.62  |

## Technical data

|  |  |
|--|--|
| <b>Current</b>                           | 16 A   |
| <b>Voltage</b>                           | 500 V  |
| <b>Rated impulse withstand voltage</b>   | 6 kV   |
| <b>Pollution degree</b>                  | 3  |
| <b>Rated voltage according to UL/CSA</b> | 600 V  |
| <b>Pole numbering system</b>             | 25-48  |
| <b>IP degree of protection</b>           | IP20 without enclosure, IP65/IP66 with enclosure |

## Further technical details

|   |                                    |
|---|------------------------------------|
| <b>Characteristics according to EN 61984</b>  | 16A 500V 6kV 3; 16A 400/690V 6kV 2 |
| <b>Mating cycles</b>                          | ≥ 500                              |
| <b>Insulation resistance</b>                  | ≥ 10 GΩ                            |
| <b>Contact resistance</b>                     | ≤ 1 mΩ                             |
| <b>Weight</b>                                 | 73,00 g                            |
| <b>Operating temperature range (min, max)</b> | -40 °C ... +125 °C                 |
| <b>UL 94 flammability rating</b>              | V-0                                |

## Material properties

|                              |                    |
|------------------------------|--------------------|
| <b>Main material</b>         | Polycarbonate (PC) |
| <b>Colour</b>                | RAL 7032 grey      |
| <b>RoHs conformity</b>       | Compliant          |
| <b>China RoHs - EFUP</b>     | E                  |
| <b>REACH SVHC substances</b> | No                 |

## Approvals / Standards

|                           |                        |
|---------------------------|------------------------|
| <b>Reference standard</b> | EN 61984:2009-06       |
| <b>Certifications</b>     | CSA, CQC, DNV, BV, EAC |
| <b>UL</b>                 | ECBT2, PVVA2           |
| <b>cUL</b>                | PVVA8                  |

## General ordering information

|                   |               |
|-------------------|---------------|
| <b>EAN13 code</b> | 8015747114097 |
| <b>eCl@ss 8.1</b> | 27440205      |
| <b>ETIM 7.0</b>   | EC000438      |

## Packaging Information

|                                  |                      |
|----------------------------------|----------------------|
| <b>Packaging length</b>          | 270,00 mm            |
| <b>Packaging height</b>          | 75,00 mm             |
| <b>Packaging width</b>           | 180,00 mm            |
| <b>Packaging weight</b>          | 2,54 kg              |
| <b>Packaging volume</b>          | 3,65 dm <sup>3</sup> |
| <b>Packaging description</b>     | Carton box           |
| <b>Packaging quantity</b>        | 30 Pcs               |
| <b>Packaging EAN code</b>        | 8015747114134        |
| <b>Sub-packaging length</b>      | 113,00 mm            |
| <b>Sub-packaging height</b>      | 36,00 mm             |
| <b>Sub-packaging width</b>       | 180,00 mm            |
| <b>Sub-packaging weight</b>      | 0,42 kg              |
| <b>Sub-packaging volume</b>      | 0,73 dm <sup>3</sup> |
| <b>Sub-packaging description</b> | Carton tray          |
| <b>Sub-packaging quantity</b>    | 5 Pcs                |
| <b>Sub-packaging EAN barcode</b> | 8015747114141        |

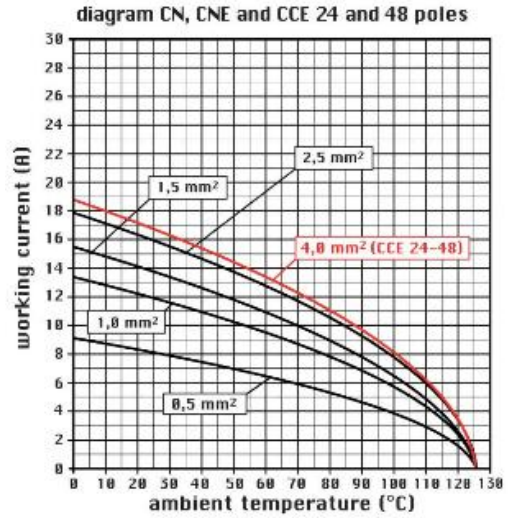
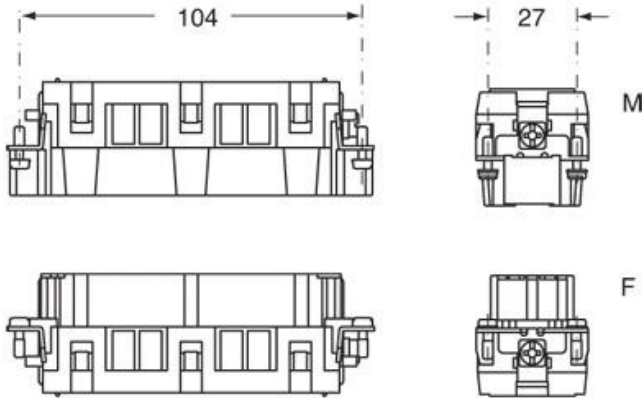
Part number

# CCEM 24 N



Catalogue drawings

Catalogue drawings



CCEF 24 N

CCEM 24 N

CCEF 24

CCEM 24

