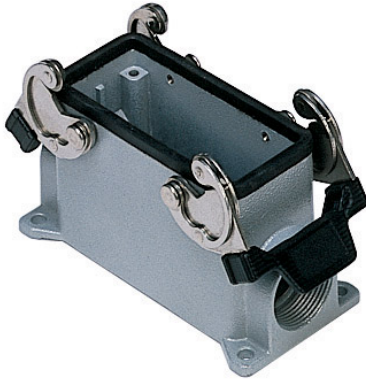


Part number

CAP 16.29



Surface mounting housing, C-TYPE series, with 2 levers, Pg29 cable entry, size "77.27", high construction



Product description

| | |
|----------------------|--------------------------|
| Product type | Surface mounting housing |
| Series | C-TYPE |
| Closing type | With 2 levers |
| Size | Size 77.27 |
| Cable entry | With cable entry Pg29 |
| Specification | High construction |

Technical data

| | |
|--------------------------------|--------------------|
| IP degree of protection | IP65 / IP66 / IP69 |
|--------------------------------|--------------------|

Further technical details

| | |
|---|----------------|
| Weight | 390,00 g |
| Operating temperature range (min, max) | -40°C...+125°C |

Material properties

| | |
|------------------------------|---|
| Other materials | Lever: Stainless steel, polyamide (PA) Gasket: NBR |
| Colour | RAL 7040 grey |
| RoHs conformity | Compliant |
| China RoHs - EFUP | E |
| REACH SVHC substances | No |

Approvals / Standards

| | |
|-----------------------|---------|
| Certifications | DNV, BV |
| UL | ECBT2 |
| cUL | ECBT8 |

General ordering information

| | |
|-------------------|---------------|
| EAN13 code | 8015747008266 |
|-------------------|---------------|

Packaging Information

| | |
|----------------------------------|-----------------------|
| Packaging length | 475,00 mm |
| Packaging height | 220,00 mm |
| Packaging width | 175,00 mm |
| Packaging weight | 3,90 kg |
| Packaging volume | 18,29 dm ³ |
| Packaging description | Carton box |
| Packaging quantity | 10 Pcs |
| Packaging EAN code | 8015747236782 |
| Sub-packaging weight | 1,95 kg |
| Sub-packaging description | Plastic packaging |
| Sub-packaging quantity | 5 Pcs |
| Sub-packaging EAN barcode | 8015747008273 |

Part number

CAP 16.29

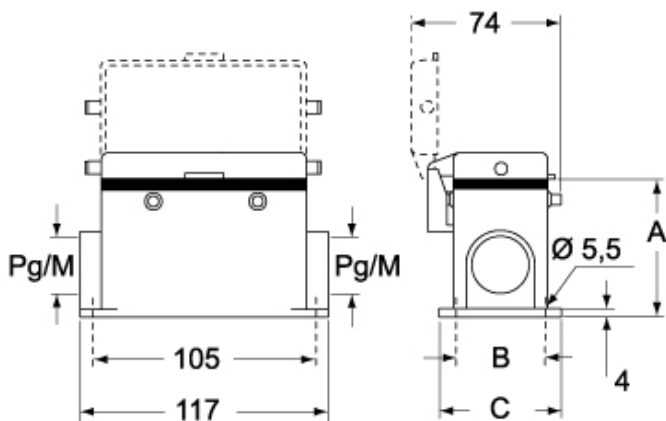


Catalogue drawings

CHP CAP - MHP MAP



CHP CS/CP CAP CS/CP - MHP CS/CP MAP CS/CP



| | A |
|------------------------|----------|
| CHP / MHP | 63 |
| CAP / MAP | 77 |
| CHP CS / MHP CS | 63 |
| CAP CS / MAP CS | 77 |
| CHP CP / MHP CP | 63 |
| CAP CP / MAP CP | 77 |