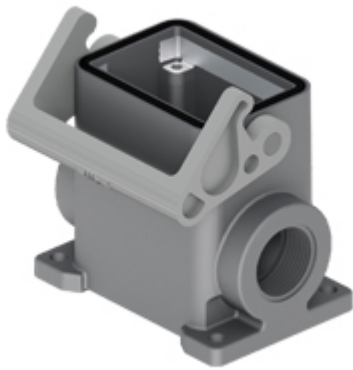


Part number

TMAP06L232B



Surface mounting housing, T-TYPE series, with 1 lever, M32 cable entry, size "44.27", high construction, with integrated protective PE jumpers

Product description

Product type	Surface mounting housing
Series	T-TYPE
Closing type	With 1 lever
Size	Size 44.27
Cable entry	With cable entry M32 x 2
Specification	High construction, with integrated protective PE jumpers

Technical data

IP degree of protection	IP65
Further technical details	
Weight	0,50 g
Operating temperature range (min, max)	-40°C ... +90°C

Material properties

Main material	Polypropylene (PP)
Other materials	Lever: Polyamide (PA) Gasket: polyurethane (PUR) PE jumpers: galvanized brass
Colour	RAL 7012 grey, RAL 7001 grey
RoHs conformity	Compliant
China RoHs - EFUP	E
REACH SVHC substances	No

Approvals / Standards

UL	ECBT2
cUL	ECBT8

General ordering information

EAN13 code	8015747277259
-------------------	---------------

Packaging Information

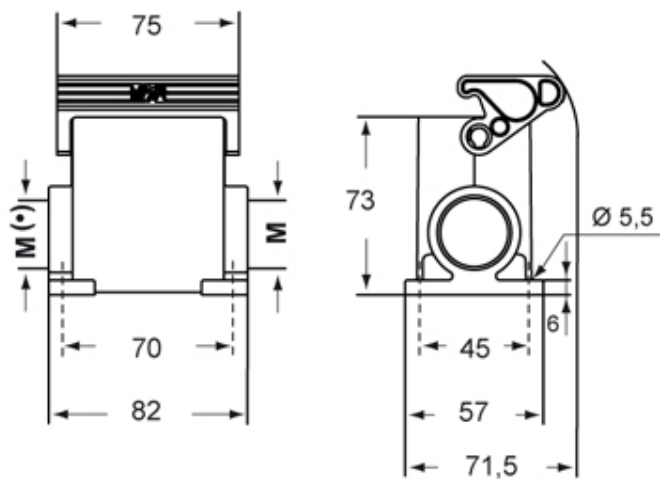
Packaging length	180,00 mm
Packaging height	210,00 mm
Packaging width	330,00 mm
Packaging volume	12,47 dm ³
Packaging description	Carton box
Packaging quantity	20 Pcs
Packaging EAN code	8015747301923
Sub-packaging description	Plastic packaging
Sub-packaging quantity	5 Pcs
Sub-packaging EAN barcode	8015747301930

Part number

TMAP06L232B



Catalogue drawings



Notes