


Part number

# TM 6395 SP



Interlocked switched socket-outlet, TM series, 3 poles + N + PE, 9 h (blue), 63 A, 208 ÷ 250 V, without fuse-carrier, with base box

#### Product description

<b>Product type</b>	Interlocked switched socket-outlet
<b>Series</b>	TM..SP/KSP
<b>N. of poles</b>	3 poles + N + 
<b>Clock position</b>	9
<b>Size</b>	145 x 565 x 18 mm
<b>Specification</b>	Without fuse-carrier With base box

#### Technical data

<b>Current</b>	63 A
<b>Voltage</b>	208 - 250 V
<b>IP degree of protection</b>	IP66 / IP67
<b>Further technical details</b>	
<b>Weight</b>	3.640,00 g
<b>Operating temperature range (min, max)</b>	-25°C ... +40°C
<b>UL 94 flammability rating</b>	V-0 (insert), V-2 (enclosure)
<b>IK rating (impact degree of protection)</b>	IK10

#### Material properties

<b>Colour</b>	RAL 7012 grey, RAL 5015 blue
---------------	------------------------------

#### Approvals / Standards

<b>Reference standard</b>	EN 60309-1, -2 e -4
---------------------------	---------------------

#### General ordering information

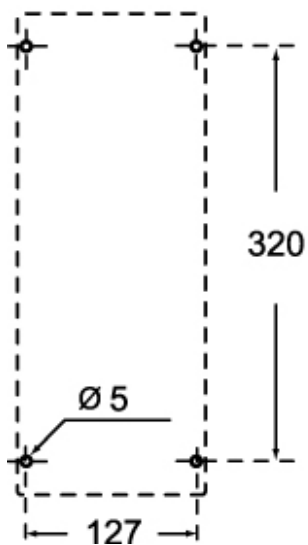
<b>EAN13 code</b>	8015747100625
-------------------	---------------

Part number

# TM 6395 SP



Catalogue drawings



Notes