


Part number

TM 6393 IT



Interlocked switched socket-outlet, TM series,
2 poles + PE, 9 h (red), 63 A, 380 ÷ 415 V,
E33 - DIII fuse carrier, with base box

Product description	
Product type	Interlocked switched socket-outlet
Series	TM.. IT
N. of poles	2 poles + 
Clock position	9
Size	145 x 565 x 18 mm
Specification	E33 - DIII fuse carrier With base box
Technical data	
Current	63 A
Voltage	380 ÷ 415 V
IP degree of protection	IP66 / IP67
Further technical details	
Weight	3.650,00 g
Operating temperature range (min, max)	-25°C ... +40°C
UL 94 flammability rating	V-0 (insert), V-2 (enclosure)
IK rating (impact degree of protection)	IK10

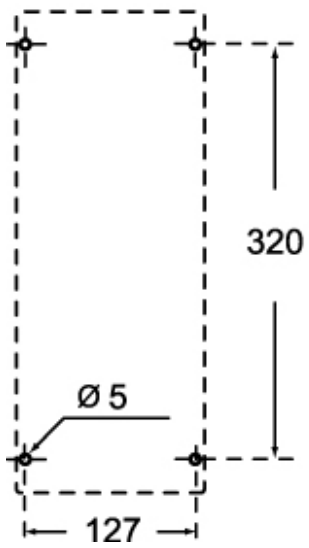
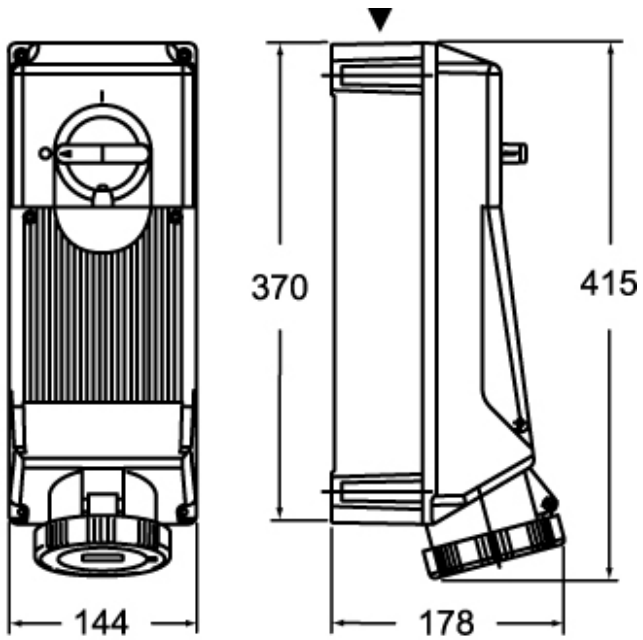
Material properties	
Colour	RAL 7012 grey, RAL 3000 red
Approvals / Standards	
Reference standard	EN 60309-1, -2 e -4
General ordering information	
EAN13 code	8015747092807
Packaging Information	
Sub-packaging weight	3,65 kg
Sub-packaging description	Carton box
Sub-packaging quantity	1 Pcs
Sub-packaging EAN barcode	8015747108935

Part number

TM 6393 IT



Catalogue drawings



Notes