


Part number

TM 6365 IT



Interlocked switched socket-outlet, TM series,
3 poles + N + PE, 6 h (red), 63 A, 346 ÷ 415
V, E33 - DIII fuse carrier, with base box

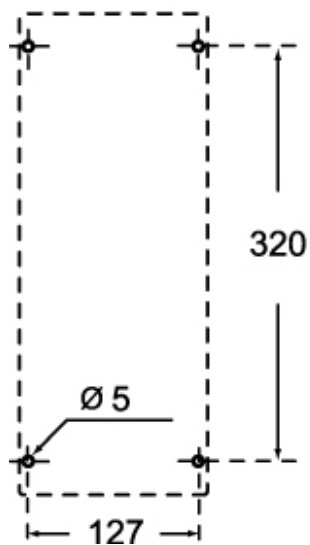
Product description		Material properties	
Product type	Interlocked switched socket-outlet	Colour	RAL 7012 grey, RAL 3000 red
Series	TM.. IT	RoHs conformity	Compliant with exemption 6(c): copper alloy containing up to 4% lead by weight
N. of poles	3 poles + N + 	China RoHs - EFUP	50
Clock position	6	REACH SVHC substances	Yes Lead
Size	145 x 565 x 18 mm	SCIP number	F6799547-ab84-42f2-938f-233ba663766d
Specification	E33 - DIII fuse carrier With base box	Approvals / Standards	
Technical data		Reference standard	EN 60309-1, -2 e -4
Current	63 A	General ordering information	
Voltage	346 - 415 V	EAN13 code	8015747092692
IP degree of protection	IP66 / IP67	Packaging Information	
Further technical details		Sub-packaging length	150,00 mm
Weight	4.120,00 g	Sub-packaging height	188,00 mm
Operating temperature range (min, max)	-25°C ... +40°C	Sub-packaging width	430,00 mm
UL 94 flammability rating	V-0 (insert), V-2 (enclosure)	Sub-packaging weight	4,12 kg
IK rating (impact degree of protection)	IK10	Sub-packaging volume	12,13 dm ³
		Sub-packaging description	Carton box
		Sub-packaging quantity	1 Pcs
		Sub-packaging EAN barcode	8015747092715

Part number

TM 6365 IT



Catalogue drawings



Notes