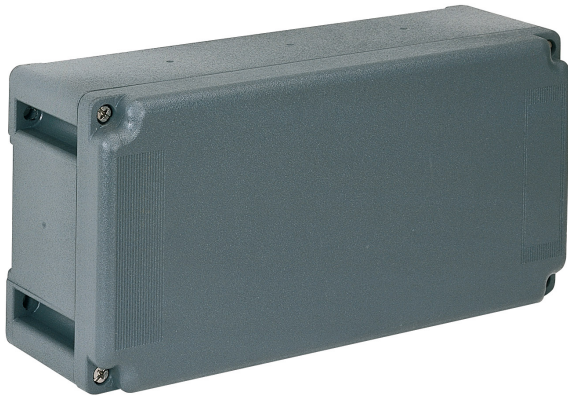


Part number

TM 2614 DB





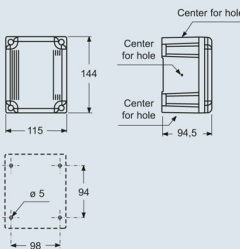
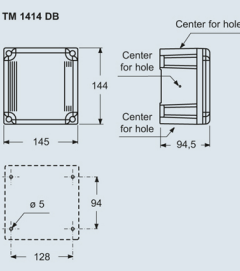
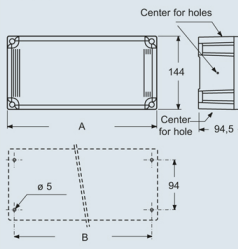
Box, TM series, with fixed cover, for 1 TM 1145 TB plate + 1 TM 1456 TB plate

Product description		Material properties	
Product type	Box	Colour	RAL 7012 grey
Series	TM		Compliant with exemption 6(c): copper alloy containing up to 4% lead by weight
Specification	With fixed cover For 1 TM 1145 TB plate + 1 TM 1456 TB plate	RoHs conformity	
Technical data		China RoHs - EFUP	50
IP degree of protection	IP66 / IP67		Yes
Further technical details		REACH SVHC substances	Lead
Weight	710,00 g	SCIP number	B0214dad-d2d9-4e91-a5b4-f4c9b4612083
Operating temperature range (min, max)	-25°C ... +40°C	General ordering information	
IK rating (impact degree of protection)	IK10	EAN13 code	8015747101424
		Packaging Information	
		Packaging length	270,00 mm
		Packaging height	185,00 mm
		Packaging width	210,00 mm
		Packaging weight	1,42 kg
		Packaging volume	10,49 dm ³
		Packaging description	Carton box
		Packaging quantity	2 Pcs
		Packaging EAN code	8015747101622
		Sub-packaging weight	0,71 kg
		Sub-packaging description	Plastic packaging
		Sub-packaging quantity	1 Pcs
		Sub-packaging EAN barcode	8015747101639

Part number TM 2614 DB



Catalogue drawings

TM complementary parts and accessories for groups													
<ul style="list-style-type: none"> ● Compliant with international standard IEC 60670 (Italian standard CEI 23-48) ● In insulating self-extinguishing thermoplastic material RAL 7012 grey ● Junction boxes suitable for the assembly of fixing plates or DIN-rail ● Fixing plates in zinc-plated steel with fixing screws ● Blind plug-type, fixed cover ● With Italian Quality Mark (CEI 23-48) 	<p>Junction boxes - IP66/IP67</p> 	<p>Junction boxes - IP66/IP67</p> 											
<p>Description</p> <p>For TM 1145 TB plate - IP66/67 degree of protection (EN 60529) For TM 1456 TB plate - IP66/67 degree of protection (EN 60529)</p> <p>For 2 TM 1145 TB plates - IP66/67 degree of protection (EN 60529) For 1 TM 1145 TB plate + 1 TM 1456 TB plate - IP66/67 degree of protection (EN 60529) For 2 TM 1456 TB plates - IP66/67 degree of protection (EN 60529)</p>	<p>Part No.</p> <p>TM 1114 DB ☉ TM 1414 DB ☉</p>	<p>Part No.</p> <p>TM 2314 DB ☉ TM 2614 DB ☉ TM 2914 DB ☉</p>											
<p>dimensions in mm</p> <p>TM 1114 DB</p>  <p>TM 1414 DB</p> 	<p>dimensions in mm</p> <p>TM ... DB</p>  <table border="1" style="margin-top: 20px;"> <thead> <tr> <th>Part No.</th> <th>A</th> <th>B</th> </tr> </thead> <tbody> <tr> <td>TM 2314 DB</td> <td>230</td> <td>213</td> </tr> <tr> <td>TM 2614 DB</td> <td>280</td> <td>243</td> </tr> <tr> <td>TM 2914 DB</td> <td>290</td> <td>273</td> </tr> </tbody> </table>	Part No.	A	B	TM 2314 DB	230	213	TM 2614 DB	280	243	TM 2914 DB	290	273
Part No.	A	B											
TM 2314 DB	230	213											
TM 2614 DB	280	243											
TM 2914 DB	290	273											
<p>Dimensions indicated are not binding and may be changed without prior notice.</p>													

Notes