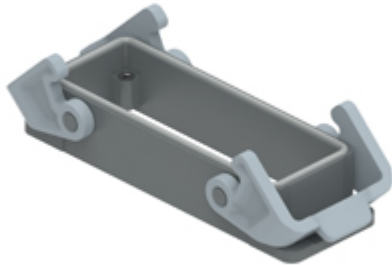


Part number

THIW 24 B



Bulkhead mounting housing, T-TYPE /W series, with 2 levers, size "104.27", with integrated protective PE jumpers

Product description	
Product type	Bulkhead mounting housing
Series	T-TYPE /W
Closing type	With 2 levers
Size	Size 104.27
Cable entry	Without cable entry
Specification	With integrated protective PE jumpers
Technical data	
IP degree of protection	IP66 / IP69
Further technical details	
Weight	0,20 g
Operating temperature range (min, max)	-40°C ... +90°C

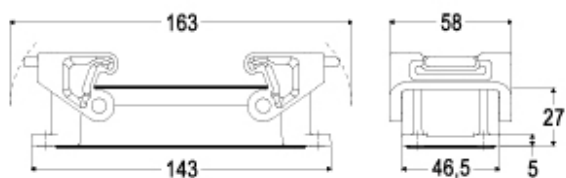
Material properties	
Main material	Polypropylene (PP)
Other materials	Lever: Polyamide (PA) Gasket: FKM PE jumpers: galvanized brass
Colour	RAL 7012 grey, RAL 7001 grey
RoHs conformity	Compliant
China RoHs - EFUP	E
REACH SVHC substances	No
Approvals / Standards	
UL	ECBT2
cUL	ECBT8
General ordering information	
EAN13 code	8015747277655
Packaging Information	
Packaging length	365,00 mm
Packaging height	195,00 mm
Packaging width	305,00 mm
Packaging volume	21,71 dm ³
Packaging description	Carton box
Packaging quantity	40 Pcs
Packaging EAN code	8015747301664
Sub-packaging description	Plastic packaging
Sub-packaging quantity	5 Pcs
Sub-packaging EAN barcode	8015747301671

Part number

THIW 24 B



Catalogue drawings



Notes