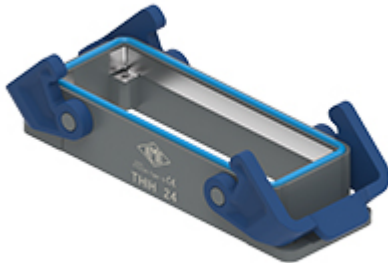


Part number

THIC 24 B



Bulkhead mounting housing, T-TYPE/C series, with 2 levers, size "104.27", with integrated protective PE jumpers

Product description

Product type	Bulkhead mounting housing
Series	T-TYPE/C
Closing type	With 2 levers
Size	Size 104.27
Cable entry	Without cable entry
Specification	With integrated protective PE jumpers

Technical data

IP degree of protection	IP66 / IP69
--------------------------------	-------------

Further technical details

Weight	0,20 g
Operating temperature range (min, max)	-50°C ... +70°C

Material properties

Main material	Polypropylene (PP)
Other materials	Lever: Polypropylene (PP) Gasket: Silicone rubber PE jumpers: galvanized brass
Colour	RAL 7012 grey, RAL 5005 blue
RoHs conformity	Compliant
China RoHs - EFUP	E
REACH SVHC substances	No

General ordering information

EAN13 code	8015747278218
-------------------	---------------

Packaging Information

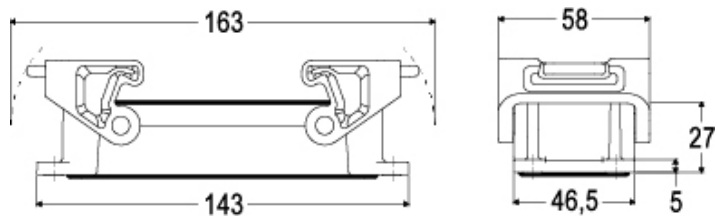
Packaging length	365,00 mm
Packaging height	195,00 mm
Packaging width	305,00 mm
Packaging description	Carton box
Packaging quantity	40 Pcs
Packaging EAN code	8015747301145
Sub-packaging description	Plastic packaging
Sub-packaging quantity	5 Pcs
Sub-packaging EAN barcode	8015747301152

Part number

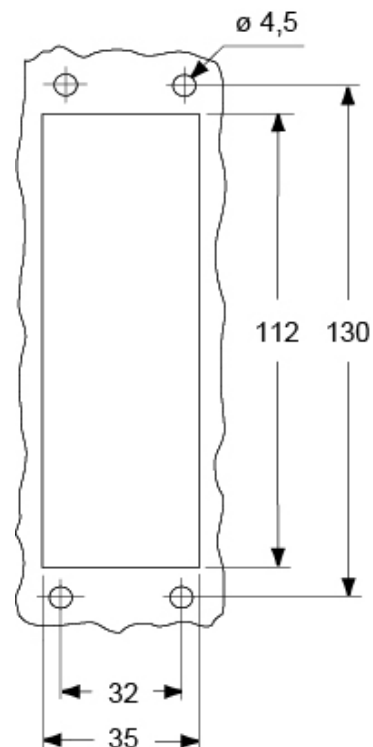
THIC 24 B



Catalogue drawings



Catalogue drawings



Notes