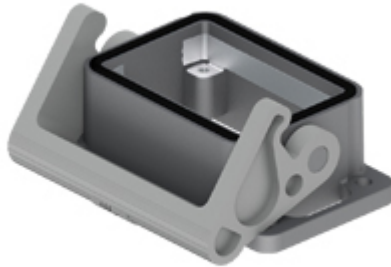


Part number

TCHI 06 LB



Bulkhead mounting housing, T-TYPE series, with 1 lever, size "44.27", with integrated protective PE jumpers

Product description	
Product type	Bulkhead mounting housing
Series	T-TYPE
Closing type	With 1 lever
Size	Size 44.27
Cable entry	Without cable entry
Specification	With integrated protective PE jumpers
Technical data	
IP degree of protection	IP65
Further technical details	
Weight	52,00 g
Operating temperature range (min, max)	-40°C ... +90°C

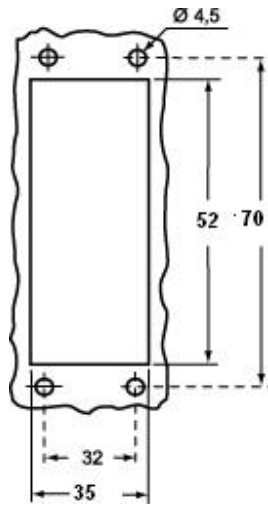
Material properties	
Main material	Polypropylene (PP)
Other materials	Lever: Polyamide (PA) Gasket: polyurethane (PUR) PE jumpers: galvanized brass
Colour	RAL 7012 grey, RAL 7001 grey
RoHs conformity	Compliant
China RoHs - EFUP	E
REACH SVHC substances	No
Approvals / Standards	
UL	ECBT2
cUL	ECBT8
General ordering information	
EAN13 code	8015747271875
eCl@ss 8.1	27440202
ETIM 7.0	EC000437
Packaging Information	
Packaging length	260,00 mm
Packaging height	190,00 mm
Packaging width	220,00 mm
Packaging weight	2,44 kg
Packaging volume	10,87 dm ³
Packaging description	Carton box
Packaging quantity	40 Pcs
Packaging EAN code	8015747271882
Sub-packaging weight	0,31 kg
Sub-packaging description	Plastic packaging
Sub-packaging quantity	5 Pcs
Sub-packaging EAN barcode	8015747271899

Part number

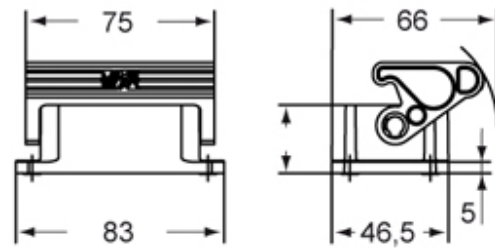
TCHI 06 LB



Catalogue drawings



Catalogue drawings



Notes