

Part number

# TAPH16.240B



Surface mounting housing, T-TYPE /H series,  
with 2 levers, M40 x 2 cable entry, size  
"77.27", with integrated protective PE jumpers

| Product description                           |                                       |
|---|---------------------------------------|
| <b>Product type</b>                           | Surface mounting housing              |
| <b>Series</b>                                 | T-TYPE /H                             |
| <b>Closing type</b>                           | With 2 levers                         |
| <b>Size</b>                                   | Size 77.27                            |
| <b>Cable entry</b>                            | With cable entry<br>M40 x 2           |
| <b>Specification</b>                          | With integrated protective PE jumpers |
| Technical data                                |                                       |
| <b>IP degree of protection</b>                | IP66 / IP69                           |
| Further technical details                     |                                       |
| <b>Weight</b>                                 | 0,50 g                                |
| <b>Operating temperature range (min, max)</b> | -40°C ... +70°C                       |

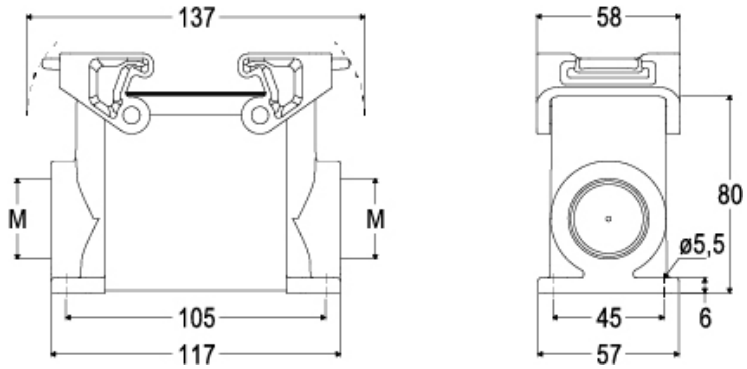
| Material properties              |   |
|----------------------------------|---|
| <b>Main material</b>             | Polypropylene (PP)  |
| <b>Other materials</b>           | Lever: Polypropylene (PP), metal-detectable<br>Gasket: HNBR<br>PE jumpers: galvanized brass |
| <b>Colour</b>                    | RAL 7012 grey, RAL 5005 blue  |
| <b>RoHs conformity</b>           | Compliant   |
| <b>China RoHs - EFUP</b>         | E   |
| <b>REACH SVHC substances</b>     | No  |
| General ordering information     |   |
| <b>EAN13 code</b>                | 8015747278058   |
| Packaging Information            |   |
| <b>Packaging length</b>          | 310,00 mm   |
| <b>Packaging height</b>          | 220,00 mm   |
| <b>Packaging width</b>           | 280,00 mm   |
| <b>Packaging volume</b>          | 19,10 dm <sup>3</sup>   |
| <b>Packaging description</b>     | Carton box  |
| <b>Packaging quantity</b>        | 20 Pcs  |
| <b>Packaging EAN code</b>        | 8015747299374   |
| <b>Sub-packaging description</b> | Plastic packaging   |
| <b>Sub-packaging quantity</b>    | 5 Pcs   |
| <b>Sub-packaging EAN barcode</b> | 8015747299381   |

Part number

# TAPH16.240B



Catalogue drawings



Notes