


Part number

# SQV 32115.5



Interlocked switched socket-outlet, SQV series, 3 poles + N + PE, 11 h (red), 32 A, 250/440 ÷ 265/460 V, sectionable fuse carrier 10 x 38 mm

Product description	
<b>Product type</b>	Interlocked switched socket-outlet
<b>Series</b>	SQV
<b>N. of poles</b>	3 poles + N + 
<b>Clock position</b>	11
<b>Specification</b>	Sectionable fuse carrier 10 x 38 mm
Technical data	
<b>Current</b>	32 A
<b>Voltage</b>	250/440V ÷ 265/460V
<b>IP degree of protection</b>	IP55
Further technical details	
<b>Operating temperature range (min, max)</b>	-25°C ... +40°C
<b>IK rating (impact degree of protection)</b>	IK08

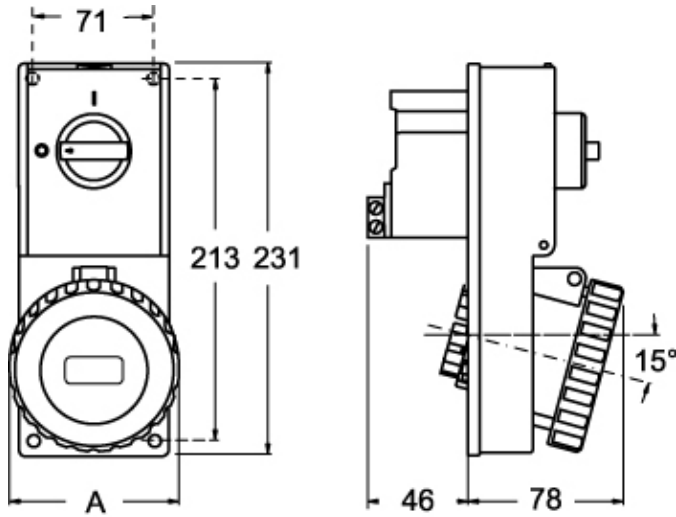
Material properties	
<b>Colour</b>	RAL 7035 grey, RAL 3000 red
Approvals / Standards	
<b>Reference standard</b>	EN 60309-1, -2 e -4
General ordering information	
<b>EAN13 code</b>	8015747160322

Part number

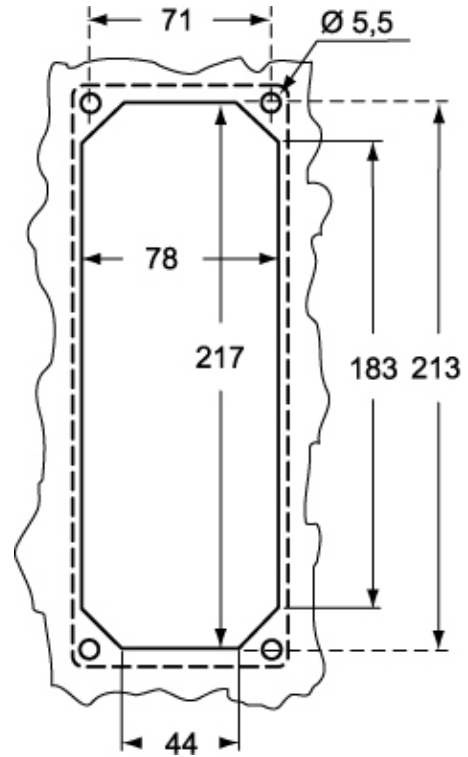
# SQV 32115.5



Catalogue drawings



Catalogue drawings



SQV.5		A
32A	2P+⊕	92
	3P+⊕	92
	3P+N+⊕	100

Notes