


Part number

SQV 1665



Interlocked switched socket-outlet, SQV series, 3 poles + N + PE, 6 h (red), 16 A, 200/346 ÷ 240/415 V, sectionable fuse carrier 10 x 38 mm

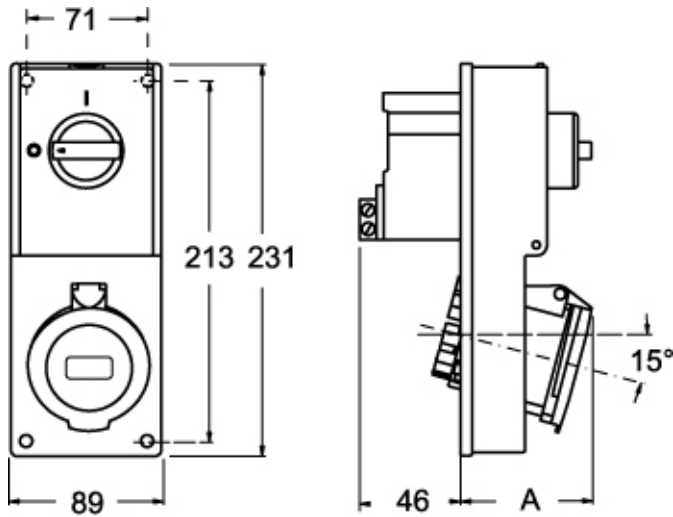
Product description		Material properties	
Product type	Interlocked switched socket-outlet	Colour	RAL 7035 grey, RAL 3000 red
Series	SQV		Compliant with exemption 6(c): copper alloy containing up to 4% lead by weight
N. of poles	3 poles + N + 	RoHs conformity	
Clock position	6	China RoHs - EFUP	50
Size	Socket fixing centre distance 88 x 230 mm	REACH SVHC substances	Yes Lead
Specification	Sectionable fuse carrier 10 x 38 mm	SCIP number	F6799547-ab84-42f2-938f-233ba663766d
Technical data		Approvals / Standards	
Current	16 A	Reference standard	EN 60309-1, -2 e -4
Voltage	200/346 ÷ 240/415 V	General ordering information	
IP degree of protection	IP44	EAN13 code	8015747087827
Further technical details		Packaging Information	
Weight	572,00 g	Packaging length	290,00 mm
Operating temperature range (min, max)	-25°C ... +40°C	Packaging height	250,00 mm
IK rating (impact degree of protection)	IK08	Packaging width	360,00 mm
		Packaging weight	5,80 kg
		Packaging volume	26,10 dm ³
		Packaging description	Carton box
		Packaging quantity	9 Pcs
		Packaging EAN code	8015747087834
		Sub-packaging weight	0,64 kg
		Sub-packaging description	Plastic packaging
		Sub-packaging quantity	1 Pcs
		Sub-packaging EAN barcode	8015747087841

Part number

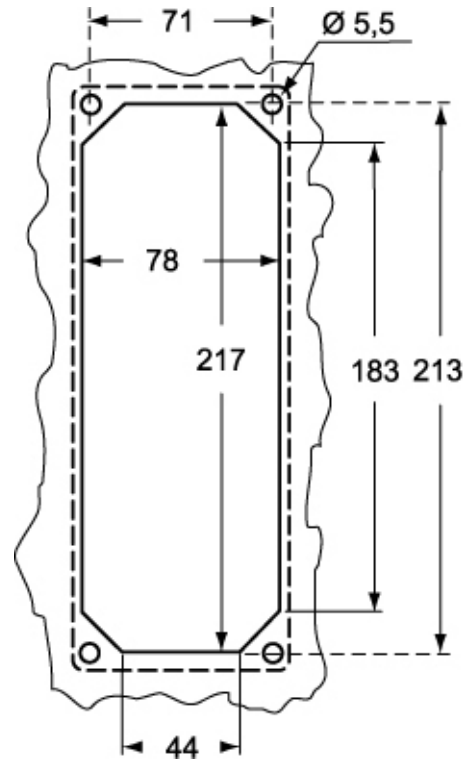
SQV 1665



Catalogue drawings



Catalogue drawings



SQV		A
16A	2P+⊕	64
	3P+⊕	65
	3P+N+⊕	67

Notes