


Part number

SQV 1645.5



Interlocked switched socket-outlet, SQV series, 3 poles + N + PE, 4 h (yellow), 16 A, 57/100 ÷ 75/130 V, sectionable fuse carrier 10 x 38 mm

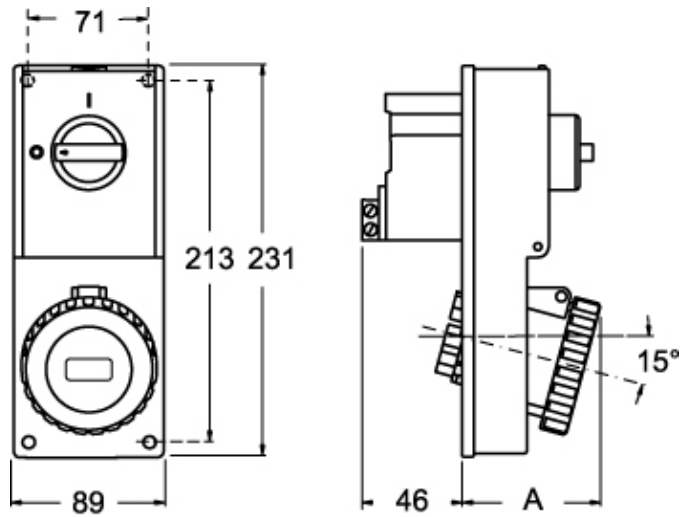
Product description		Material properties	
Product type	Interlocked switched socket-outlet	Colour	RAL 7035 grey, RAL 1021 yellow
Series	SQV		Compliant with exemption 6(c): copper alloy containing up to 4% lead by weight
N. of poles	3 poles + N + 	RoHs conformity	6(c): copper alloy containing up to 4% lead by weight
Clock position	4	China RoHs - EFUP	50
Size	Socket fixing centre distance 88 x 230 mm	REACH SVHC substances	Yes Lead
Specification	Sectionable fuse carrier 10 x 38 mm	SCIP number	F6799547-ab84-42f2-938f-233ba663766d
Technical data		Approvals / Standards	
Current	16 A	Reference standard	EN 60309-1, -2 e -4
Voltage	57/100 ÷ 75/130 V	General ordering information	
IP degree of protection	IP55	EAN13 code	8015747087544
Further technical details		Packaging Information	
Weight	604,00 g	Sub-packaging length	116,00 mm
Operating temperature range (min, max)	-25°C ... +40°C	Sub-packaging height	103,00 mm
IK rating (impact degree of protection)	IK08	Sub-packaging width	230,00 mm
		Sub-packaging weight	0,60 kg
		Sub-packaging volume	2,75 dm ³
		Sub-packaging description	Carton box
		Sub-packaging quantity	1 Pcs
		Sub-packaging EAN barcode	8015747087551

Part number

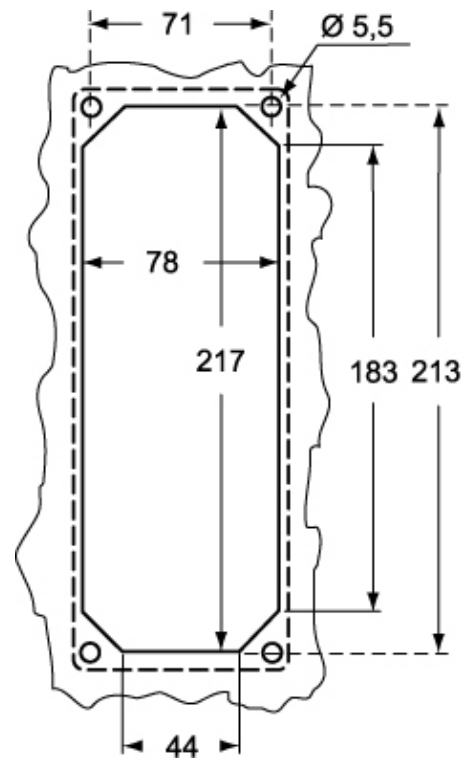
SQV 1645.5



Catalogue drawings



Catalogue drawings



SQV.5		A
16A	2P+⊕	67
	3P+⊕	67
	3P+N+⊕	70

Notes