


Part number

SQE 3263.5



Interlocked switched socket-outlet, SQE series, 2 poles + PE, 6 h (blue), 32 A, 200 ÷ 250 V, without fuse-carrier

| Product description | |
|--|---|
| Product type | Interlocked switched socket-outlet |
| Series | SQE |
| N. of poles | 2 poles +  |
| Clock position | 6 |
| Size | Socket fixing centre distance 88 x 230 mm |
| Specification | Without fuse-carrier |
| Technical data | |
| Current | 32 A |
| Voltage | 200 ÷ 250 V |
| IP degree of protection | IP55 |
| Further technical details | |
| Weight | 608,00 g |
| Operating temperature range (min, max) | -25°C ... +40°C |
| IK rating (impact degree of protection) | IK08 |

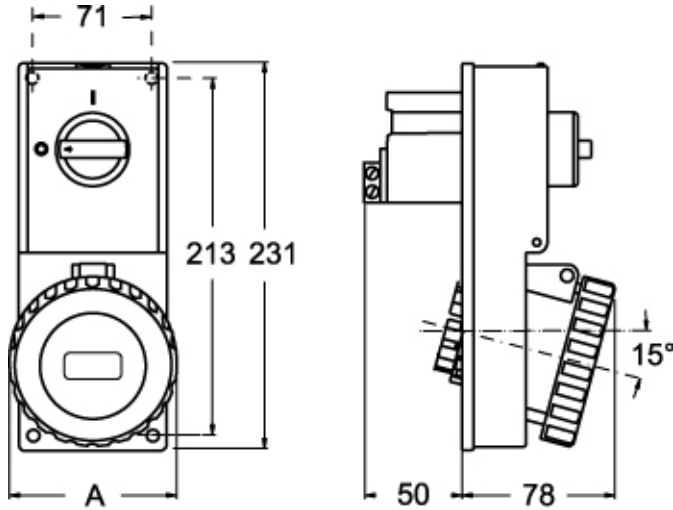
| Material properties | |
|----------------------------------|--|
| Colour | RAL 7035 grey, RAL 5015 blue |
| RoHs conformity | Compliant with exemption 6(c): copper alloy containing up to 4% lead by weight |
| China RoHs - EFUP | 50 |
| REACH SVHC substances | Yes Lead |
| SCIP number | Ce861c8d-b979-403b-96d9-80aef6dc281d |
| Approvals / Standards | |
| Reference standard | EN 60309-1, -2 e -4 |
| General ordering information | |
| EAN13 code | 8015747086646 |
| Packaging Information | |
| Packaging length | 380,00 mm |
| Packaging height | 250,00 mm |
| Packaging width | 295,00 mm |
| Packaging weight | 5,93 kg |
| Packaging volume | 28,03 dm ³ |
| Packaging description | Carton box |
| Packaging quantity | 9 Pcs |
| Packaging EAN code | 8015747086653 |
| Sub-packaging weight | 0,66 kg |
| Sub-packaging description | Plastic packaging |
| Sub-packaging quantity | 1 Pcs |
| Sub-packaging EAN barcode | 8015747086660 |

Part number

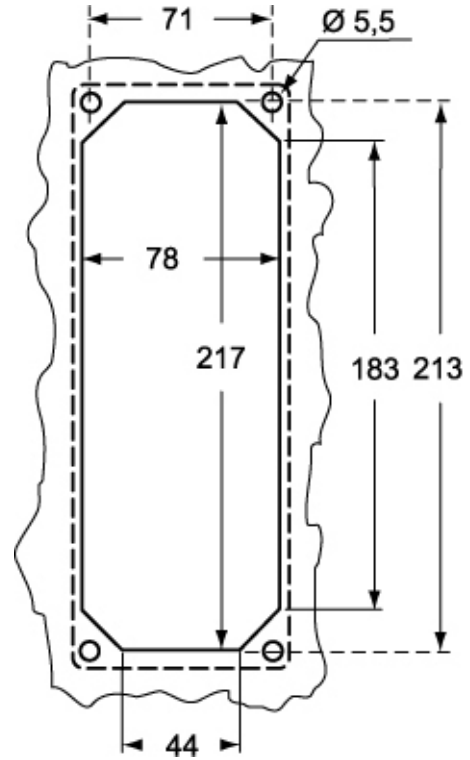
SQE 3263.5



Catalogue drawings



Catalogue drawings



| SQE.5 | | A |
|-------|--------|-----|
| 32A | 2P+⊕ | 92 |
| | 3P+⊕ | 92 |
| | 3P+N+⊕ | 100 |

Notes