


Part number

SQE 32115



Interlocked switched socket-outlet, SQE series, 3 poles + N + PE, 11 h (red), 32 A, 250/440 ÷ 265/460 V, without fuse-carrier

Product description

Product type	Interlocked switched socket-outlet
Series	SQE
N. of poles	3 poles + N + 
Clock position	11
Specification	Without fuse-carrier

Technical data

Current	32 A
Voltage	250/440V ÷ 265/460V
IP degree of protection	IP44

Further technical details

Operating temperature range (min, max)	-25°C ... +40°C
IK rating (impact degree of protection)	IK08

Material properties

Colour	RAL 7035 grey, RAL 3000 red
---------------	-----------------------------

Approvals / Standards

Reference standard	EN 60309-1, -2 e -4
---------------------------	---------------------

General ordering information

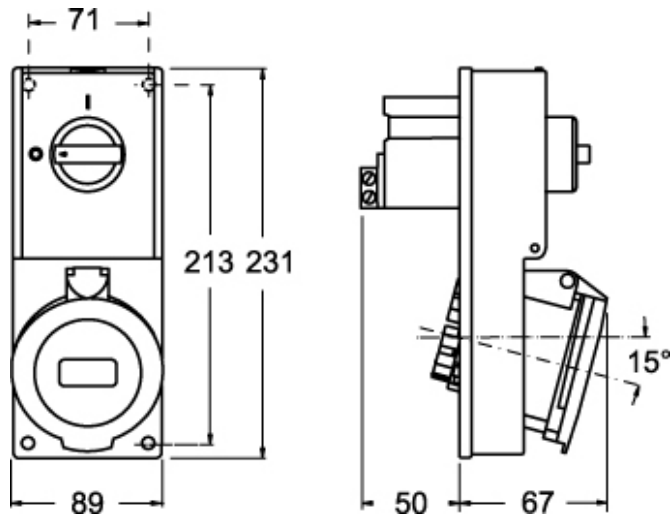
EAN13 code	8015747159937
-------------------	---------------

Part number

SQE 32115



Catalogue drawings



Catalogue drawings



Notes