


Part number

SQE 16115.5



Interlocked switched socket-outlet, SQE series, 3 poles + N + PE, 11 h (red), 16 A, 250/440 ÷ 265/460 V, without fuse-carrier

| Product description | |
|--|---|
| Product type | Interlocked switched socket-outlet |
| Series | SQE |
| N. of poles | 3 poles + N +  |
| Clock position | 11 |
| Specification | Without fuse-carrier |
| Technical data | |
| Current | 16 A |
| Voltage | 250/440V ÷ 265/460V |
| IP degree of protection | IP55 |
| Further technical details | |
| Operating temperature range (min, max) | -25°C ... +40°C |
| IK rating (impact degree of protection) | IK08 |

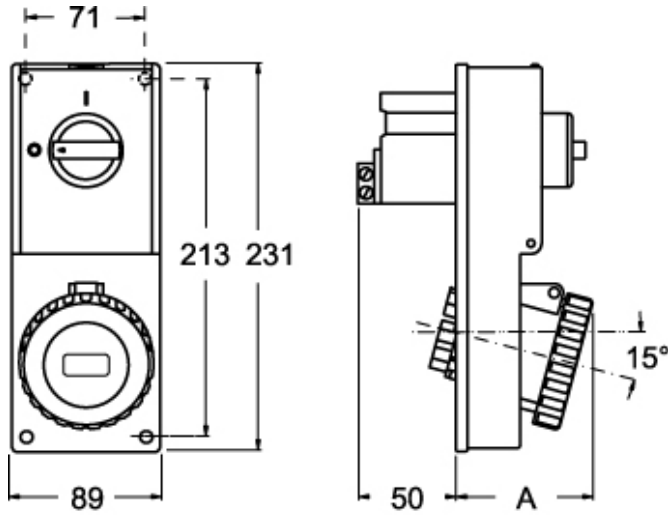
| Material properties | |
|------------------------------|-----------------------------|
| Colour | RAL 7035 grey, RAL 3000 red |
| Approvals / Standards | |
| Reference standard | EN 60309-1, -2 e -4 |
| General ordering information | |
| EAN13 code | 8015747159753 |

Part number

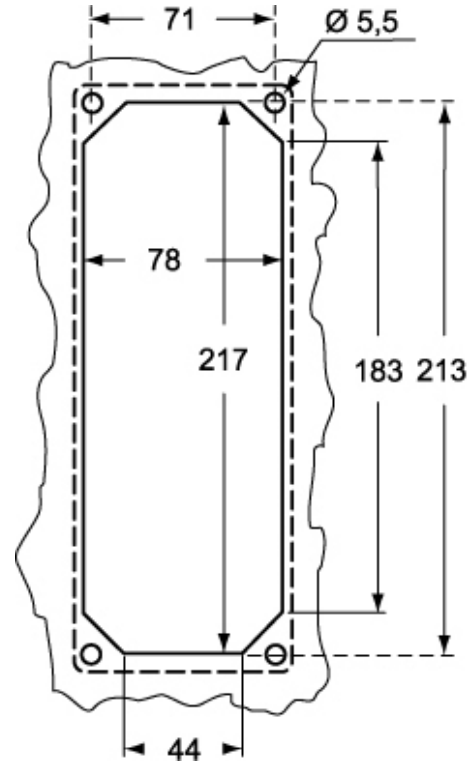
SQE 16115.5



Catalogue drawings



Catalogue drawings



| SQE.5 | | A |
|-------|--------|----|
| 16A | 2P+⊕ | 67 |
| | 3P+⊕ | 67 |
| | 3P+N+⊕ | 70 |

Notes