

Part number

# SIPW 1665 SI



Flush-mounting plug, PLUSO series, 3 poles + N + PE, 6 h (red), 16 A, 200/346 ÷ 240/415 V, with phase inverter

| Product description                           |                           | Material properties                 |  |
|---|---------------------------|-------------------------------------|--|
| <b>Product type</b>                           | Plug<br>Flush-mounting    | <b>Colour</b>                       | RAL 7035 grey, RAL 3000 red  |
| <b>Series</b>                                 | SIPW...SI, PLUSO          | <b>RoHs conformity</b>              | Compliant with exemption 6(c): copper alloy containing up to 4% lead by weight |
| <b>Connection type</b>                        | Screw terminal connection | <b>China RoHs - EFUP</b>            | 50   |
| <b>N. of poles</b>                            | 3 poles + N +             | <b>REACH SVHC substances</b>        | Yes<br>Lead  |
| <b>Clock position</b>                         | 6                         | <b>SCIP number</b>                  | Ca7de37f-add8-4b77-9861-279c94903ade   |
| <b>Specification</b>                          | With phase inverter       | <b>Approvals / Standards</b>        |  |
| <b>Technical data</b>                         |                           | <b>Reference standard</b>           | EN 60309-1 and -2  |
| <b>Current</b>                                | 16 A                      | <b>General ordering information</b> |  |
| <b>Voltage</b>                                | 200/346 ÷ 240/415 V       | <b>EAN13 code</b>                   | 8015747083973  |
| <b>IP degree of protection</b>                | IP67                      | <b>Packaging Information</b>        |  |
| <b>Further technical details</b>              |                           | <b>Packaging length</b>             | 330,00 mm  |
| <b>Weight</b>                                 | 222,00 g                  | <b>Packaging height</b>             | 175,00 mm  |
| <b>Operating temperature range (min, max)</b> | -25°C ... +40°C           | <b>Packaging width</b>              | 295,00 mm  |
|   |                           | <b>Packaging weight</b>             | 2,53 kg  |
|   |                           | <b>Packaging volume</b>             | 17,04 dm <sup>3</sup>  |
|   |                           | <b>Packaging description</b>        | Carton box   |
|   |                           | <b>Packaging quantity</b>           | 10 Pcs   |
|   |                           | <b>Packaging EAN code</b>           | 8015747083980  |

Part number

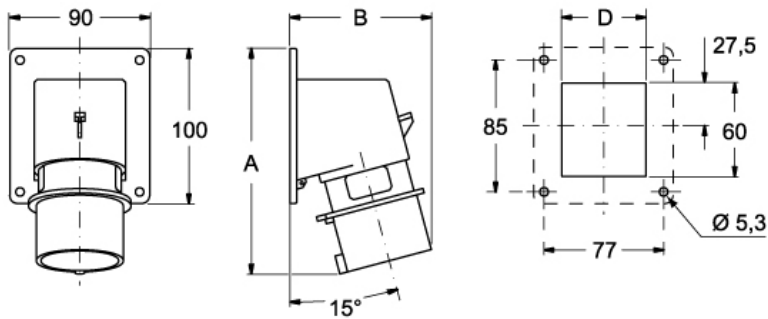
# SIPW 1665 SI



Catalogue drawings

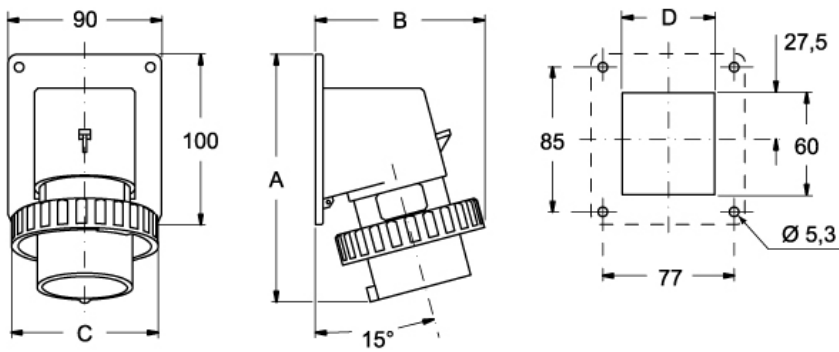
Catalogue drawings

SIP ... SI



|            | A   | B   | C  |
|------------|-----|-----|----|
| <b>16A</b> | 146 | 93  | 54 |
| <b>32A</b> | 160 | 106 | 62 |

SIPW ... SI



|            | A   | B   | C   | D  |
|------------|-----|-----|-----|----|
| <b>16A</b> | 146 | 99  | 86  | 54 |
| <b>32A</b> | 160 | 113 | 100 | 62 |

Notes