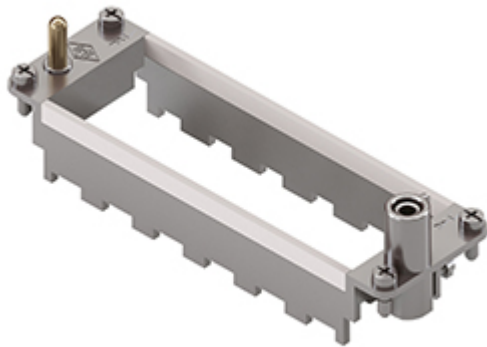


Part number

RX 06 TM



Frame for Mixo inserts, 6 modules, for 6 modular inserts and enclosures size "104.27", frame for hoods, HNM - High Number of Matings version

Product description	
Product type	Frame for Mixo inserts
Size	6 modules
Specification	For 6 modular inserts and enclosures size 104.27 Frame for hoods, HNM - High Number of Matings version
Further technical details	
Weight	58,00 g

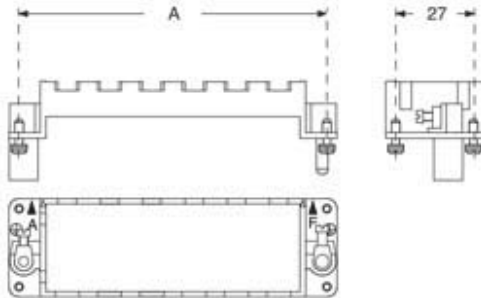
Material properties	
RoHs conformity	Compliant with exemption 6(c): copper alloy containing up to 4% lead by weight
China RoHs - EFUP	50
REACH SVHC substances	Yes Lead
SCIP number	C0556c52-3b1b-4ffb-87d5-58c9db853c44
Approvals / Standards	
Certifications	DNV
UL	ECBT2
cUL	ECBT8
General ordering information	
EAN13 code	8015747239622
eCl@ss 8.1	27440210
ETIM 7.0	EC002310
Packaging Information	
Packaging length	270,00 mm
Packaging height	75,00 mm
Packaging width	180,00 mm
Packaging weight	2,30 kg
Packaging volume	3,65 dm ³
Packaging description	Carton box
Packaging quantity	30 Pcs
Packaging EAN code	8015747239691
Sub-packaging length	113,00 mm
Sub-packaging height	36,00 mm
Sub-packaging width	180,00 mm
Sub-packaging weight	0,38 kg
Sub-packaging volume	0,73 dm ³
Sub-packaging description	Carton tray
Sub-packaging quantity	5 Pcs
Sub-packaging EAN barcode	8015747239707

Part number

RX 06 TM



Catalogue drawings



part No.	A (mm)	for housings size
RX 02 TM / TF	44	44,27
RX 03 TM / TF	57	57,27
RX 04 TM / TF	77,5	77,27 and 77,62
RX 06 TM / TF	104	104,27 and 104,62

Notes

California Proposition 65 Information



WARNING

This product can expose you to lead and its compounds, known to the State of California to cause cancer and/or reproductive toxicity. For more information go to www.P65Warnings.ca.gov.