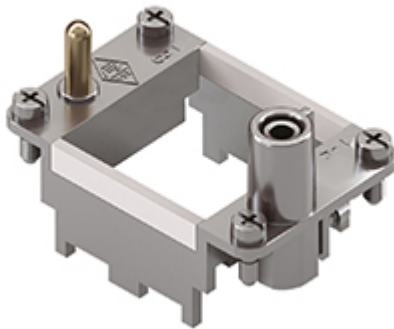


Part number

RX 02 TM



Frame for Mixo inserts, 2 modules, for 2 modular inserts and enclosures size "44.27", frame for hoods, HNM - High Number of Matings version

Product description

Product type	Frame for Mixo inserts
Size	2 modules
Specification	For 2 modular inserts and enclosures size 44.27 Frame for hoods, HNM - High Number of Matings version

Further technical details

Weight	45,00 g
---------------	---------

Material properties

RoHs conformity	Compliant with exemption 6(c): copper alloy containing up to 4% lead by weight
China RoHs - EFUP	50
REACH SVHC substances	Yes Lead
SCIP number	C0556c52-3b1b-4ffb-87d5-58c9db853c44
Approvals / Standards	
Certifications	DNV
UL	ECBT2
cUL	ECBT8

General ordering information

EAN13 code	8015747239714
eCl@ss 8.1	27440210
ETIM 7.0	EC002310

Packaging Information

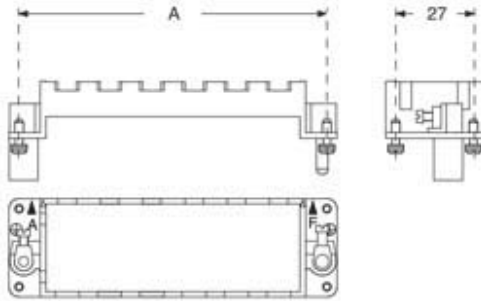
Packaging length	270,00 mm
Packaging height	75,00 mm
Packaging width	180,00 mm
Packaging weight	2,80 kg
Packaging volume	3,65 dm ³
Packaging description	Carton box
Packaging quantity	60 Pcs
Packaging EAN code	8015747265485
Sub-packaging length	104,00 mm
Sub-packaging height	36,00 mm
Sub-packaging width	180,00 mm
Sub-packaging weight	0,47 kg
Sub-packaging volume	0,67 dm ³
Sub-packaging description	Carton tray
Sub-packaging quantity	10 Pcs
Sub-packaging EAN barcode	8015747265492

Part number

RX 02 TM



Catalogue drawings



part No.	A (mm)	for housings size
RX 02 TM / TF	44	44,27
RX 03 TM / TF	57	57,27
RX 04 TM / TF	77,5	77,27 and 77,62
RX 06 TM / TF	104	104,27 and 104,62

Notes

California Proposition 65 Information



WARNING

This product can expose you to lead and its compounds, known to the State of California to cause cancer and/or reproductive toxicity. For more information go to www.P65Warnings.ca.gov.