


Part number

PEW 216 PQF



Schuko® flush-mounting socket outlet, PLUSO series, 2 poles + PE, 16 A, 200 ÷ 250 V

Product description

Product type	Socket Flush-mounting
Series	PEW...PQF, PLUSO
N. of poles	2 poles + 
Size	Socket fixing centre distance 60 x 60 mm
Specification	Schuko®

Technical data

Current	16 A
Voltage	200 ÷ 250 V
IP degree of protection	IP67

Further technical details

Weight	105,00 g
Operating temperature range (min, max)	-25°C ... +40°C

General ordering information

EAN13 code	8015747074063
-------------------	---------------

Packaging Information

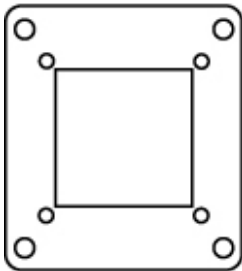
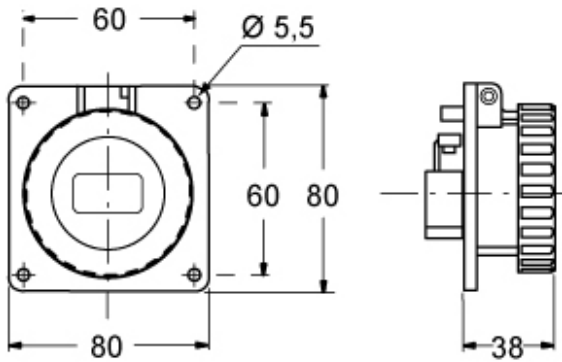
Packaging length	200,00 mm
Packaging height	165,00 mm
Packaging width	200,00 mm
Packaging weight	1,21 kg
Packaging volume	6,60 dm ³
Packaging description	Carton box
Packaging quantity	10 Pcs
Packaging EAN code	8015747074070

Part number

PEW 216 PQF



Catalogue drawings



Notes