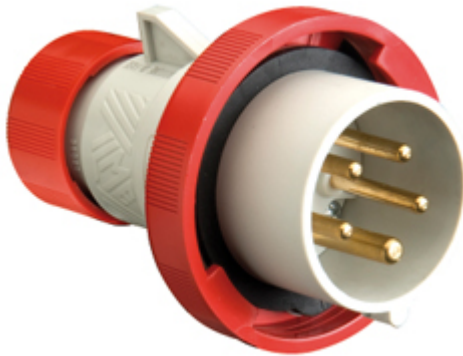



Part number

PESW 1665 SV



Mobile plug, PLUSO series, SQUICH® quick connection, 3 poles + N + PE, 6 h (red), 16 A, 380 ÷ 415 V, straight

Product description

| | |
|------------------------|---|
| Product type | Plug Mobile |
| Series | PESW...SV, PLUSO |
| Connection type | SQUICH® quick connection |
| N. of poles | 3 poles + N +  |
| Clock position | 6 |
| Specification | Straight |

Technical data

| | |
|--------------------------------|-------------|
| Current | 16 A |
| Voltage | 380 ÷ 415 V |
| IP degree of protection | IP66 / IP67 |

Further technical details

| | |
|---|-----------------|
| Weight | 206,00 g |
| Operating temperature range (min, max) | -25°C ... +40°C |

Material properties

| | |
|------------------------------|---|
| Colour | RAL 7035 grey, RAL 3000 red Compliant with exemption |
| RoHs conformity | 6(c): copper alloy containing up to 4% lead by weight |
| China RoHs - EFUP | 50 |
| REACH SVHC substances | Yes Lead |
| SCIP number | Ca7de37f-add8-4b77-9861-279c94903ade |

Approvals / Standards

| | |
|---------------------------|-------------------|
| Reference standard | EN 60309-1 and -2 |
|---------------------------|-------------------|

General ordering information

| | |
|-------------------|---------------|
| EAN13 code | 8015747187268 |
|-------------------|---------------|

Packaging Information

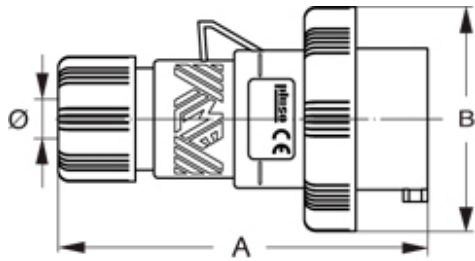
| | |
|------------------------------|-----------------------|
| Packaging length | 330,00 mm |
| Packaging height | 170,00 mm |
| Packaging width | 352,00 mm |
| Packaging weight | 4,22 kg |
| Packaging volume | 19,75 dm ³ |
| Packaging description | Carton box |
| Packaging quantity | 20 Pcs |
| Packaging EAN code | 8015747187299 |

Part number

PESW 1665 SV



Catalogue drawings



Notes

