

Part number

PB 32002 PI



Flush-mounting socket outlet, PLUSO series, 2 poles, 32 A, 20 ÷ 25 V, straight

| Product description | | Material properties | |
|---|--------------------------|------------------------------|---|
| Product type | Socket Flush-mounting | Colour | RAL 7035 grey, RAL 4001 lilac |
| Series | PB...PI, PLUSO | RoHs conformity | Compliant with exemption 6(c): copper alloy containing up to 4% lead by weight |
| N. of poles | 2 poles | China RoHs - EFUP | 50 |
| Clock position | No key way | REACH SVHC substances | Yes Lead |
| Specification | Straight | SCIP number | Ca7de37f-add8-4b77-9861-279c94903ade |
| Technical data | | Approvals / Standards | |
| Current | 32 A | Reference standard | EN 60309-1 and -2 |
| Voltage | 20 ÷ 25 V | General ordering information | |
| IP degree of protection | IP44 | EAN13 code | 8015747061759 |
| Further technical details | | Packaging Information | |
| Weight | 96,00 g | Packaging length | 195,00 mm |
| Operating temperature range (min, max) | -25°C ... +40°C | Packaging height | 135,00 mm |
| | | Packaging width | 155,00 mm |
| | | Packaging weight | 1,09 kg |
| | | Packaging volume | 4,08 dm ³ |
| | | Packaging description | Carton box |
| | | Packaging quantity | 10 Pcs |
| | | Packaging EAN code | 8015747221665 |

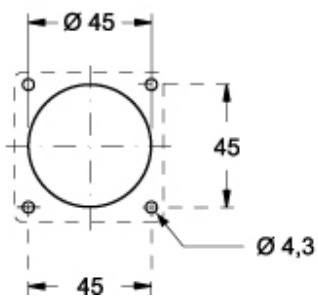
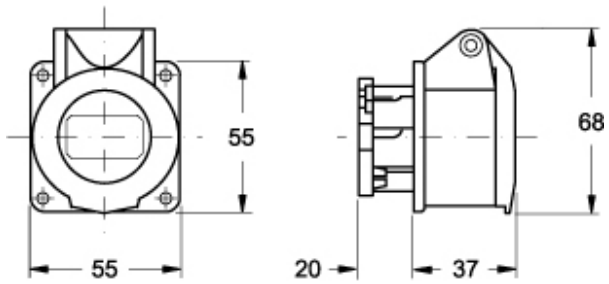
Part number

PB 32002 PI



Catalogue drawings

(16 / 32A) PB ... PI



Notes