

Part number

PB 16002 PI



Flush-mounting socket outlet, PLUSO series, 2 poles, 16 A, 20 ÷ 25 V, straight

Product description		Material properties	
Product type	Socket Flush-mounting	Colour	RAL 7035 grey, RAL 4001 lilac
Series	PB...PI, PLUSO	SCIP number	Ca7de37f-add8-4b77-9861-279c94903ade
N. of poles	2 poles	Approvals / Standards	
Clock position	No key way	Reference standard	EN 60309-1 and -2
Specification	Straight	General ordering information	
Technical data		EAN13 code	8015747060639
Current	16 A	Packaging Information	
Voltage	20 ÷ 25 V	Packaging length	195,00 mm
IP degree of protection	IP44	Packaging height	135,00 mm
Further technical details		Packaging width	155,00 mm
Weight	96,00 g	Packaging weight	1,07 kg
Operating temperature range (min, max)	-25°C ... +40°C	Packaging volume	4,08 dm ³
		Packaging description	Carton box
		Packaging quantity	10 Pcs
		Packaging EAN code	8015747082075

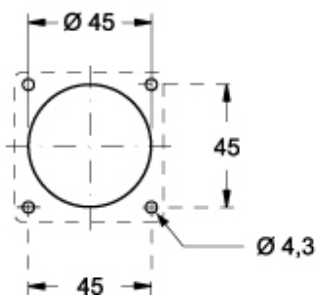
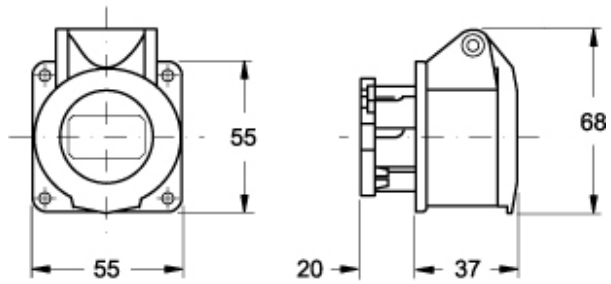
Part number

PB 16002 PI



Catalogue drawings

(16 / 32A) PB ... PI



Notes