

Part number

MZ7PE 15L225



Surface mounting housing, E-Xtreme® CZ7 series, with 1 lever, M25 x 2 cable entry, size "49.16"

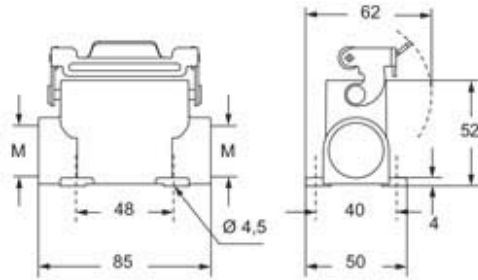
Product description		Material properties	
Product type	Surface mounting housing	Other materials	Lever: Stainless steel
Series	E-Xtreme® CZ7	Colour	RAL 7016 grey
Closing type	With 1 lever	RoHs conformity	Compliant
Size	Size 49.16	China RoHs - EFUP	E
Cable entry	With cable entry M25 x 2	REACH SVHC substances	No
Technical data		Approvals / Standards	
IP degree of protection	IP66 / IP67 / IP69	UL	ECBT2
Further technical details		cUL	ECBT8
Further technical details		General ordering information	
Operating temperature range (min, max)	-40°C...+125°C	EAN13 code	8015747255097
		eCl@ss 8.1	27440202
		ETIM 7.0	EC000437

Part number

MZ7PE 15L225



Catalogue drawings



Notes