

Part number

# MZ7P 25 LS25



Surface mounting housing, CZ7 series, with 1 lever, M25 cable entry, size "66.16", high construction, with metal cover

| Product description                           |                                     |
|---|-------------------------------------|
| <b>Product type</b>                           | Surface mounting housing            |
| <b>Series</b>                                 | CZ7                                 |
| <b>Closing type</b>                           | With 1 lever                        |
| <b>Size</b>                                   | Size 66.16                          |
| <b>Cable entry</b>                            | With cable entry<br>M25             |
| <b>Specification</b>                          | High construction, with metal cover |
| Technical data                                |                                     |
| <b>IP degree of protection</b>                | IP66 / IP67 / IP69                  |
| Further technical details                     |                                     |
| <b>Weight</b>                                 | 238,00 g                            |
| <b>Operating temperature range (min, max)</b> | -40°C...+125°C                      |

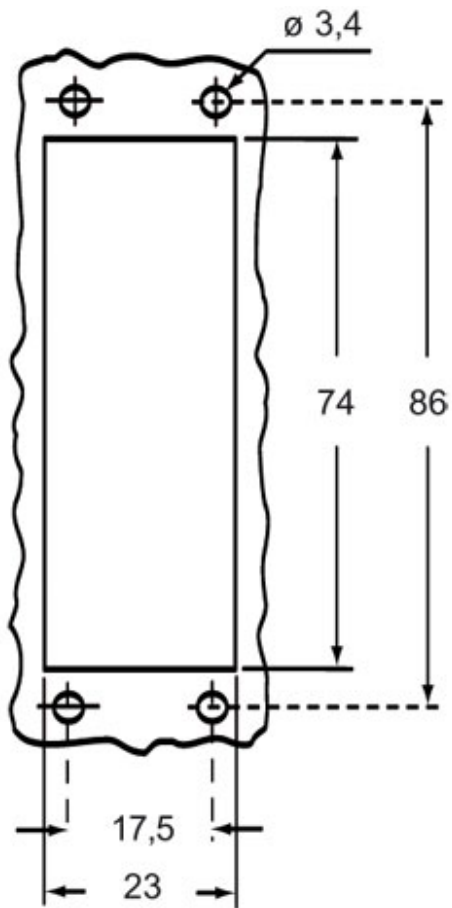
| Material properties              |                        |
|----------------------------------|------------------------|
| <b>Other materials</b>           | Lever: Stainless steel |
| <b>Colour</b>                    | RAL 7040 grey          |
| <b>RoHs conformity</b>           | Compliant              |
| <b>China RoHs - EFUP</b>         | E                      |
| <b>REACH SVHC substances</b>     | No                     |
| Approvals / Standards            |                        |
| <b>UL</b>                        | ECBT2                  |
| <b>cUL</b>                       | ECBT8                  |
| General ordering information     |                        |
| <b>EAN13 code</b>                | 8015747240024          |
| <b>eCl@ss 8.1</b>                | 27440202               |
| <b>ETIM 7.0</b>                  | EC000437               |
| Packaging Information            |                        |
| <b>Packaging length</b>          | 190,00 mm              |
| <b>Packaging height</b>          | 125,00 mm              |
| <b>Packaging width</b>           | 330,00 mm              |
| <b>Packaging weight</b>          | 2,59 kg                |
| <b>Packaging volume</b>          | 7,84 dm <sup>3</sup>   |
| <b>Packaging description</b>     | Carton box             |
| <b>Packaging quantity</b>        | 10 Pcs                 |
| <b>Packaging EAN code</b>        | 8015747261357          |
| <b>Sub-packaging weight</b>      | 1,30 kg                |
| <b>Sub-packaging description</b> | Plastic packaging      |
| <b>Sub-packaging quantity</b>    | 5 Pcs                  |
| <b>Sub-packaging EAN barcode</b> | 8015747261364          |

Part number

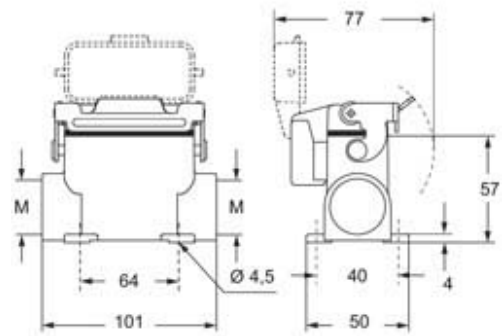
# MZ7P 25 LS25



Catalogue drawings



Catalogue drawings



Notes