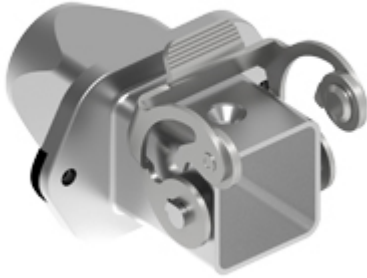


Part number

MKAXS IVG20



Bulkhead mounting housing, EMC series, with 1 lever, M20 rear cable entry, size "21.21"

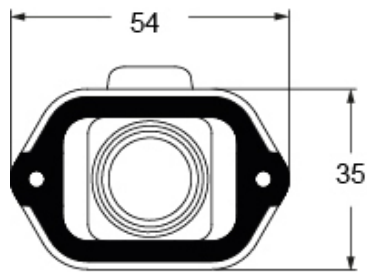
Product description		Material properties	
Product type	Bulkhead mounting housing	Main material	Zinc die-cast
Series	EMC	Other materials	Lever: Stainless steel Gasket: Conductive elastomer
Closing type	With 1 lever	Colour	RAL 7040 grey
Size	Size "21.21"	RoHs conformity	Compliant
Cable entry	Rear cable entry M20	China RoHs - EFUP	E
Technical data		REACH SVHC substances	No
IP degree of protection	IP44 - IP66 / IP67 / IP69 with CKR 65 (D)	Approvals / Standards	
Further technical details		Certifications	DNV, BV
Weight	86,00 g	UL	ECBT2
Operating temperature range (min, max)	-40°C...+125°C	cUL	ECBT8
		General ordering information	
		EAN13 code	8015747263405
		eCl@ss 8.1	27440202
		ETIM 7.0	EC000437
		Packaging Information	
		Sub-packaging length	210,00 mm
		Sub-packaging height	40,00 mm
		Sub-packaging width	175,00 mm
		Sub-packaging weight	0,86 kg
		Sub-packaging volume	1,47 dm ³
		Sub-packaging description	Carton box
		Sub-packaging quantity	10 Pcs
		Sub-packaging EAN barcode	8015747263429

Part number

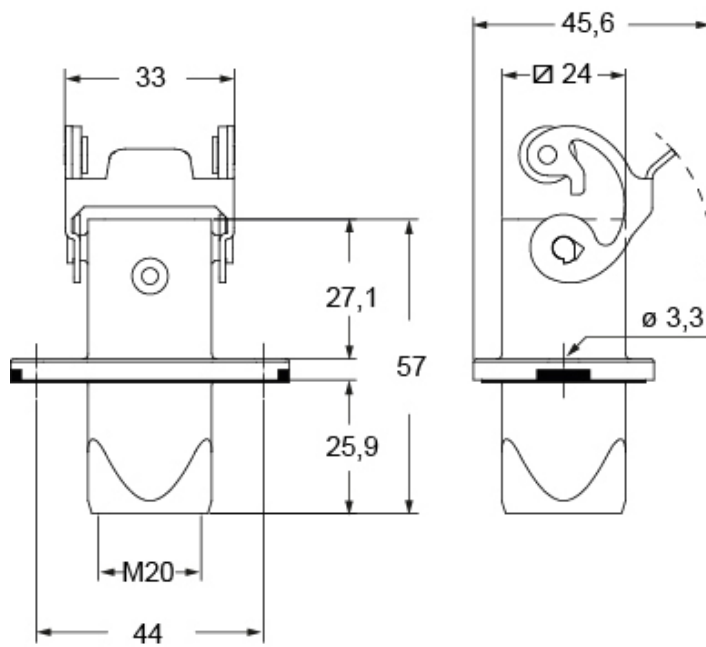
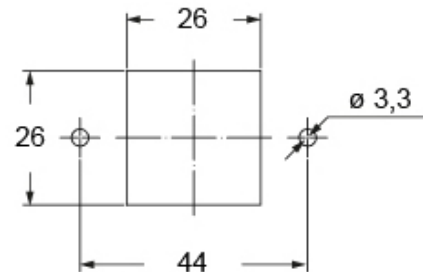
MKAXS IVG20



Catalogue drawings



Catalogue drawings



Notes