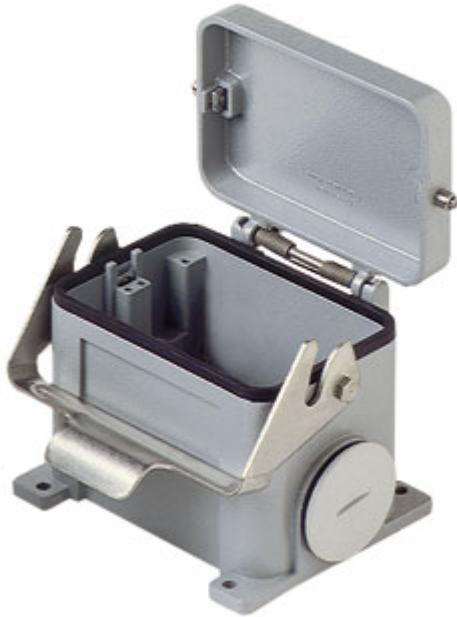


Part number

MHP 48 LS40



Surface mounting housing, C-TYPE series, with 1 lever, M40 x 2 cable entry, size "104.62", with metal cover

Product description

| | |
|----------------------|-----------------------------|
| Product type | Surface mounting housing |
| Series | C-TYPE |
| Closing type | With 1 lever |
| Size | Size 104.62 |
| Cable entry | With cable entry M40 x 2 |
| Specification | With metal cover |

Technical data

| | |
|--------------------------------|------|
| IP degree of protection | IP65 |
|--------------------------------|------|

Further technical details

| | |
|-----------------------------------------------|----------------|
| Weight | 1.246,00 g |
| Operating temperature range (min, max) | -40°C...+125°C |

Material properties

| | |
|------------------------------|-------------------------------------------------------|
| Other materials | Lever: Stainless steel, polyamide (PA) Gasket: NBR |
| Colour | RAL 7040 grey |
| RoHs conformity | Compliant |
| China RoHs - EFUP | E |
| REACH SVHC substances | No |

Approvals / Standards

| | |
|-----------------------|---------|
| Certifications | DNV, BV |
| UL | ECBT2 |
| cUL | ECBT8 |

General ordering information

| | |
|-------------------|---------------|
| EAN13 code | 8015747055130 |
| eCl@ss 8.1 | 27440202 |
| ETIM 7.0 | EC000437 |

Packaging Information

| | |
|----------------------------------|-----------------------|
| Packaging length | 305,00 mm |
| Packaging height | 180,00 mm |
| Packaging width | 275,00 mm |
| Packaging weight | 5,21 kg |
| Packaging volume | 15,10 dm ³ |
| Packaging description | Carton box |
| Packaging quantity | 4 Pcs |
| Packaging EAN code | 8015747055147 |
| Sub-packaging weight | 1,30 kg |
| Sub-packaging description | Plastic packaging |
| Sub-packaging quantity | 1 Pcs |
| Sub-packaging EAN barcode | 8015747055154 |

Part number

MHP 48 LS40



Notes