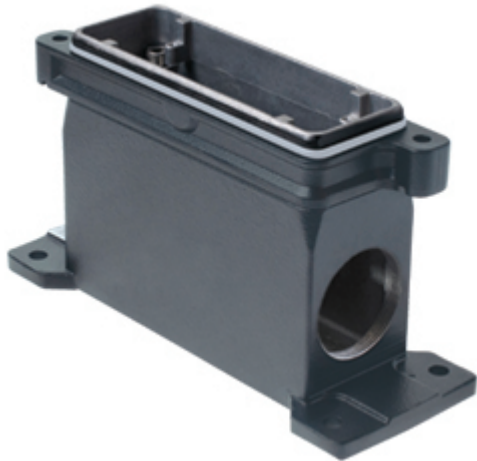


Part number

# MGPE 24.240



Surface mounting housing, E-Xtreme® IP68 series, for 2 screws, M40 x 2 cable entry, size "104.27"

#### Product description

<b>Product type</b>	Surface mounting housing
<b>Series</b>	E-Xtreme® IP68
<b>Closing type</b>	With 2 screws
<b>Size</b>	Size 104.27
<b>Cable entry</b>	With cable entry M40 x 2

#### Technical data

**IP degree of protection** IP66 / IP68 / IP69

#### Further technical details

**Operating temperature range (min, max)** -40°C...+125°C

#### Material properties

<b>Other materials</b>	Gasket: FKM
<b>Colour</b>	RAL 7016 grey
<b>RoHs conformity</b>	Compliant
<b>China RoHs - EFUP</b>	E
<b>REACH SVHC substances</b>	No

#### Approvals / Standards

<b>Certifications</b>	DNV, BV
<b>UL</b>	ECBT2
<b>cUL</b>	ECBT8

#### General ordering information

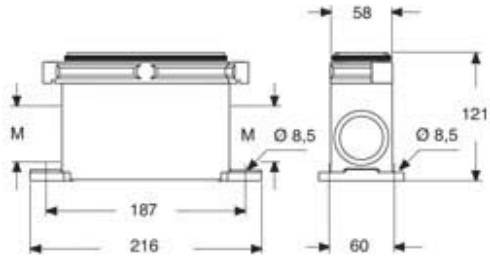
<b>EAN13 code</b>	8015747254533
<b>eCl@ss 8.1</b>	27440202
<b>ETIM 7.0</b>	EC000437

Part number

# MGPE 24.240



Catalogue drawings



---

Notes