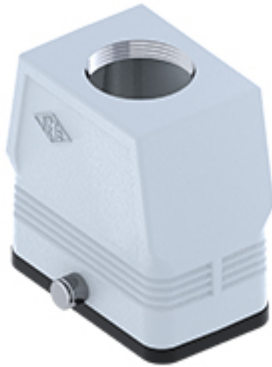


Part number

MFV 10 GYC40



Hood, CENTRAL LEVER series, with 2 pegs, M40 top cable entry without adapter, size "57.27", high construction

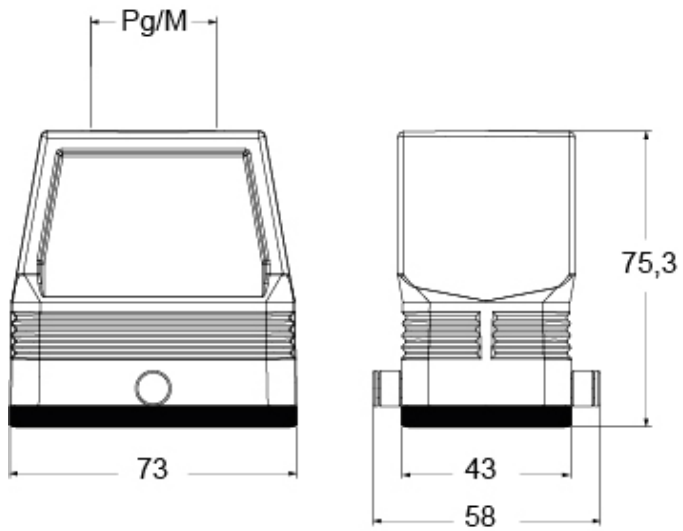
Product description		Material properties	
Product type	Hood	Other materials	Gasket: NBR
Series	CENTRAL LEVER	Colour	RAL 7040 grey
Closing type	With 2 pegs	RoHs conformity	Compliant
Size	Size 57.27	China RoHs - EFUP	E
Cable entry	Top cable entry M40	REACH SVHC substances	No
Specification	High construction	Approvals / Standards	
Technical data		UL	ECBT2
IP degree of protection	IP65	cUL	ECBT8
Further technical details		General ordering information	
Weight	0,50 g	EAN13 code	8015747264914
Operating temperature range (min, max)	-40°C...+125°C	eCl@ss 8.1	27440202
		ETIM 7.0	EC000437
		Packaging Information	
		Packaging length	150,00 mm
		Packaging height	160,00 mm
		Packaging width	300,00 mm
		Packaging volume	7,20 dm ³
		Packaging description	Carton box
		Packaging quantity	20 Pcs
		Packaging EAN code	8015747264921
		Sub-packaging description	Plastic packaging
		Sub-packaging quantity	5 Pcs
		Sub-packaging EAN barcode	8015747264938

Part number

MFV 10 GYC40



Catalogue drawings



Notes