

Part number

M7PE 06 L220



Surface mounting housing, E-Xtreme® V-TYPE series, with 1 lever, M20 x 2 cable entry, size "44.27"

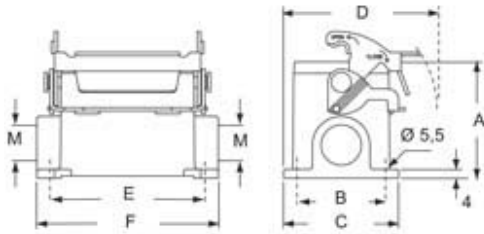
Product description		Material properties	
Product type	Surface mounting housing	Other materials	Lever: Stainless steel Gasket: FKM
Series	E-Xtreme® V-TYPE	Colour	RAL 7016 grey
Closing type	With 1 lever	RoHs conformity	Compliant
Size	Size 44.27	China RoHs - EFUP	E
Cable entry	With cable entry M20 x 2	REACH SVHC substances	No
Technical data		Approvals / Standards	
IP degree of protection	IP66 / IP67 / IP69	Certifications	DNV, BV
Further technical details		UL	ECBT2
Weight	1,00 g	cUL	ECBT8
Operating temperature range (min, max)	-40°C...+125°C	General ordering information	
		EAN13 code	8015747254205
		eCl@ss 8.1	27440202
		ETIM 7.0	EC000437
		Packaging Information	
		Packaging length	475,00 mm
		Packaging height	160,00 mm
		Packaging width	140,00 mm
		Packaging description	Carton box
		Packaging quantity	10 Pcs
		Packaging EAN code	8015747222174
		Sub-packaging description	Plastic packaging
		Sub-packaging quantity	5 Pcs
		Sub-packaging EAN barcode	8015747059831

Part number

M7PE 06 L220



Catalogue drawings



type	A	B	C	D	E	F
M7PE 06 L	53	40	52	70	70	82
M7APE 06 L	73	45	57	72,5	70	82

Notes