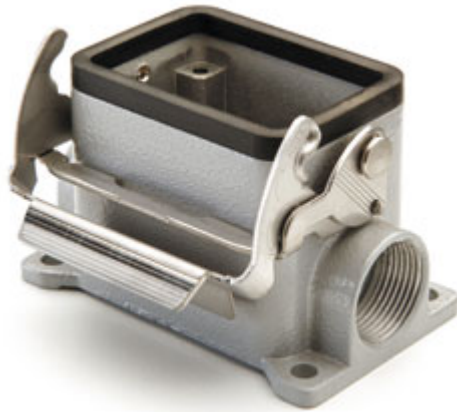


Part number

M7P 06 L20



Surface mounting housing, V-TYPE series, with 1 lever, M20 cable entry, size "44.27"

Product description

Product type	Surface mounting housing
Series	V-TYPE
Closing type	With 1 lever
Size	Size 44.27
Cable entry	With cable entry M20

Technical data

IP degree of protection	IP66 / IP67 / IP69
--------------------------------	--------------------

Further technical details

Weight	201,00 g
Operating temperature range (min, max)	-40°C...+125°C

Material properties

Other materials	Lever: Stainless steel Gasket: NBR
Colour	RAL 7040 grey
RoHs conformity	Compliant
China RoHs - EFUP	E
REACH SVHC substances	No

Approvals / Standards

Certifications	DNV, BV
UL	ECBT2
cUL	ECBT8

General ordering information

EAN13 code	8015747093606
eCl@ss 8.1	27440202
ETIM 7.0	EC000437

Packaging Information

Packaging length	285,00 mm
Packaging height	170,00 mm
Packaging width	190,00 mm
Packaging weight	4,30 kg
Packaging volume	9,21 dm ³
Packaging description	Carton box
Packaging quantity	20 Pcs
Packaging EAN code	8015747178259
Sub-packaging weight	1,08 kg
Sub-packaging description	Plastic packaging
Sub-packaging quantity	5 Pcs
Sub-packaging EAN barcode	8015747178266

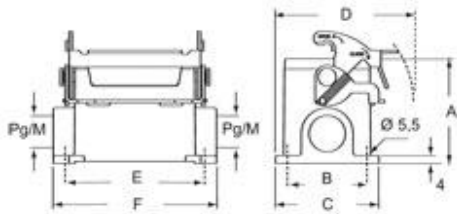
Part number

M7P 06 L20



Catalogue drawings

C7P L - C7AP L M7P L - M7AP L



	A	B	C	D	E	F
C7P/M7P 06 L	53	40	52	70	70	82
C7AP/M7AP 06 L	73	45	57	72,5	70	82

Notes