

Part number

M7APE 06L240



Surface mounting housing, E-Xtreme® V-TYPE series, with 1 lever, M40 x 2 cable entry, size "44.27", high construction

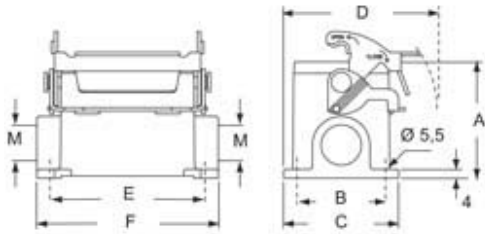
Product description		Material properties	
Product type	Surface mounting housing	Other materials	Lever: Stainless steel Gasket: FKM
Series	E-Xtreme® V-TYPE	Colour	RAL 7016 grey
Closing type	With 1 lever	RoHs conformity	Compliant
Size	Size 44.27	China RoHs - EFUP	E
Cable entry	With cable entry M40 x 2	REACH SVHC substances	No
Specification	High construction	Approvals / Standards	
Technical data		Certifications	DNV, BV
IP degree of protection	IP66 / IP67 / IP69	UL	ECBT2
Further technical details		cUL	ECBT8
Operating temperature range (min, max)	-40°C...+125°C	General ordering information	
		EAN13 code	8015747254106
		eCl@ss 8.1	27440202
		ETIM 7.0	EC000437

Part number

M7APE 06L240



Catalogue drawings



type	A	B	C	D	E	F
M7PE 06 L	53	40	52	70	70	82
M7APE 06 L	73	45	57	72,5	70	82

Notes