


Part number

KI 6375 RI5



Interlocked switched socket-outlet, KI series, 3 poles + N + PE, 7 h (black), 63 A, 480 ÷ 500 V, with compartment for modular units, 7 DIN-rail modules EN 60715

Product description

| | |
|-----------------------|---|
| Product type | Interlocked switched socket-outlet |
| Series | KI..RI5 |
| N. of poles | 3 poles + N +  |
| Clock position | 7 |
| Cable entry | Pg29 |
| Specification | With compartment for modular units, 7 DIN-rail modules EN 60715 |

Technical data

| | |
|--------------------------------|-------------|
| Current | 63 A |
| Voltage | 480 ÷ 500 V |
| IP degree of protection | IP55 |

Further technical details

| | |
|--|-----------------|
| Weight | 2.750,00 g |
| Operating temperature range (min, max) | -25°C ... +40°C |
| IK rating (impact degree of protection) | IK10 |

Material properties

| | |
|---------------|-------------------------------|
| Colour | RAL 7035 grey, RAL 9005 black |
|---------------|-------------------------------|

Approvals / Standards

| | |
|---------------------------|---------------------|
| Reference standard | EN 60309-1, -2 e -4 |
|---------------------------|---------------------|

General ordering information

| | |
|-------------------|---------------|
| EAN13 code | 8015747049771 |
|-------------------|---------------|

Packaging Information

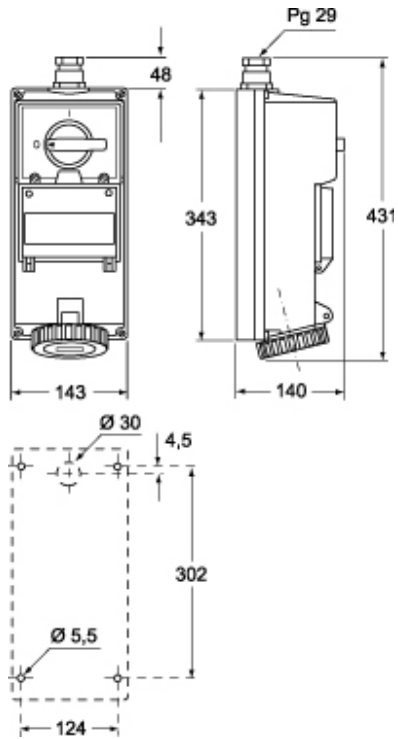
| | |
|------------------------------|---------------|
| Packaging weight | 2,75 kg |
| Packaging description | Carton box |
| Packaging quantity | 1 Pcs |
| Packaging EAN code | 8015747110921 |

Part number

KI 6375 RI5



Catalogue drawings



Notes